



PURE-PRO

WARDROBE STORAGE SYSTEM

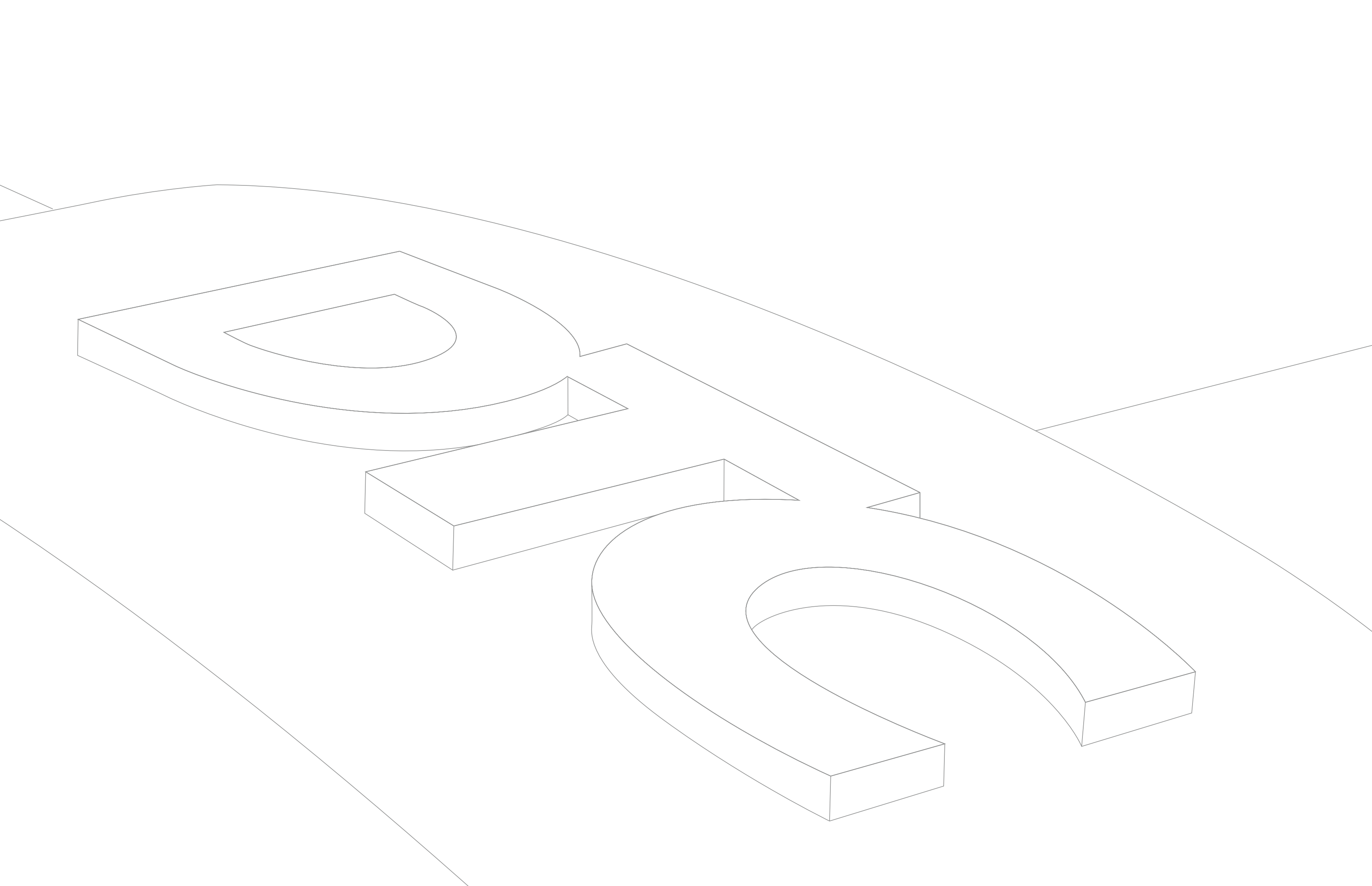
Guangdong Dongtai Hardware Precision Manufacturing Co.,Ltd
Industry Road,Leliu Port,Leliu,Shunde,Foshan,Guangdong,China.
Tel: +86(0)757-25332283 Fax: 0757-25551876 Zip: 528322
Website:www.dtcddtc.com E-mail: dtc@dtcdtc.com

DTC-CA-2023-25-1
April 2023

WWW.DTCDTC.COM

WWW.DTCDTC.COM

DTC
Global Quality Benchmark





PURE-PRO Wardrobe Storage System

The combination of glass within a grey matt frame expresses an feeling of high style as drawers instantly light up the wardrobe interiors and create a feeling of sophistication. The multi-functional accessories box, along with other available storage units, optimize closet space and make organization effortless. PURE-PRO makes a fashion statement in bedroom by outfitting built-in wardrobe furniture with elegance and beauty.



COMPANY PROFILE



Established in 1991, DTC has been deeply involved in the manufacture of home hardware for 32 years with the mission of "Creating greater value for all customers by providing competitive and comprehensive furniture hardware solutions based on continuous innovation and adaptation to the times."

We specialise in servicing the need of functional hardware such as concealed hinges, drawer slides, drawer box systems, kitchen and wardrobe storage systems, lifting systems, sliding door systems, connecting fittings and more for home-living spaces.

At present, DTC's scale and market share rank first in China's home hardware industry and in the top three worldwide. DTC's sales network covers all provincial capitals and key cities in China and extends to 106 countries and regions around the world.

Factory 1



Factory 2



Factory 3



Factory 5



Factory 6



Guided by customer demand and driven by technological innovation, DTC's organization employs excellent professional teams. Product development, intelligent manufacturing, brand planning and marketing services groups work to provide customers with a complete solution throughout product design, production, distribution, installation and after-sales service.

The complete chain of DTC's manufacturing facilities are located in China with production sites covering over 600,000 m².

The intelligent manufacturing industrial park at DTC headquarters produces medium and high-end hardware products that support smart homes and smart appliances where industry-leading R&D and testing centers and advanced manufacturing facilities are based. Intelligent management platforms that integrate R&D, production and marketing are being run to realize cross-regional and cross-border coordinations. This provides a foundation for continuous organizational optimization and business model innovation and thus enhances product competitiveness.

Now, and in the future, DTC will advance with the times, embrace the capital market, plan overseas production bases and expand its global service network to better provide quality products and solutions. Maintaining close cooperation with worldwide furniture manufacturers and strategic dealers at all levels, we strive to create greater value for all customers to make home living the best it can be!



Table of Contents



LQ SERIES STORAGE SYSTEM

5

Storage Drawers with Illuminated Glass	9~10
Storage Drawers with Glass	11~12
Storage Drawer Inserts	13~16



LK SERIES STORAGE SYSTEM

17

Deep Storage Baskets	17-18
Wired Shoe Racks	19-20
Trouser Hangers	21-22



LY SERIES STORAGE SYSTEM

23

Dressing Mirrors	25-26
Hanger Rails	27-28
Tie Racks	29-30
Password Boxes	31-32
Lift-down Hangers	33-34
Tall Corner Hangers	35-36
Rotating Shoe Racks	37-38







LQ SERIES | Storage Drawers with Illuminated Glass



Sophisticated insert boxes have the luxurious beauty of leather, offering a gentle touch with an elegant appearance. They neatly organize jewelry making it easy to see what is on your collection.

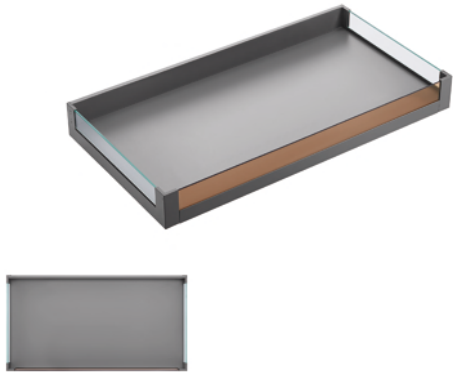


Choose from available drawers of different heights to create dedicated spaces for hats, scarves, and belts, keeping them tidy and organized.



Your wardrobe storage can also reflect your personal taste. Freely mix and match dividers of various materials, such as glass, wood, or stone to make each drawer truly unique.

Low Drawer Roll-out

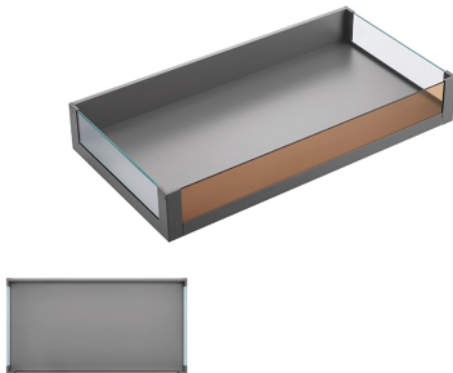


Product Information

Item No.	*Cabinet width	Nominal length	Finish
LQ11450Q19600	600mm	450mm	Grey Matt(E30)
LQ11450Q19800	800mm	450mm	Grey Matt(E30)
LQ11450Q19900	900mm	450mm	Grey Matt(E30)

Refer to page 27 and 28 for drawer inserts

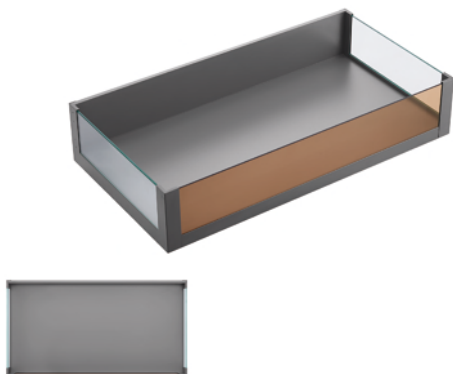
Medium Drawer Roll-out



Product Information

Item No.	*Cabinet width	Nominal length	Finish
LQ12450Q19600	600mm	450mm	Grey Matt(E30)
LQ12450Q19800	800mm	450mm	Grey Matt(E30)
LQ12450Q19900	900mm	450mm	Grey Matt(E30)

High Drawer Roll-out



Product Information

Item No.	*Cabinet width	Nominal length	Finish
LQ13450Q19600	600mm	450mm	Grey Matt(E30)
LQ13450Q19800	800mm	450mm	Grey Matt(E30)
LQ13450Q19900	900mm	450mm	Grey Matt(E30)

*Based on cabinet side = 16mm or 18mm

LQ SERIES | Storage Drawers with Glass



The classic brown sides and leather organizers are skillfully matched to provide efficient and practical storage.

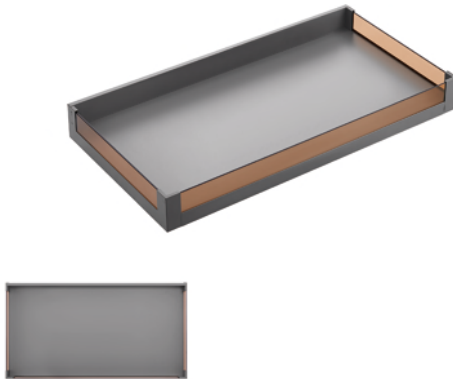


The optics of drawers with glass sides convey a sense of high fashion and personal luxury. The tones of brown and grey are visually appealing.



The 6mm tempered glass inserts can be tinted brown, clear or replaced with wood panels to create multiple color schemes.

Low Drawer Roll-out

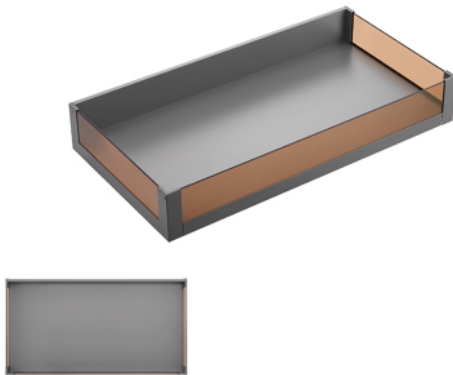


Product Information

Item No.	*Cabinet width	Nominal length	Finish
LQ11450Q14600	600mm	450mm	Grey Matt(E30)
LQ11450Q14800	800mm	450mm	Grey Matt(E30)
LQ11450Q14900	900mm	450mm	Grey Matt(E30)

Refer to page 27 and 28 for drawer inserts

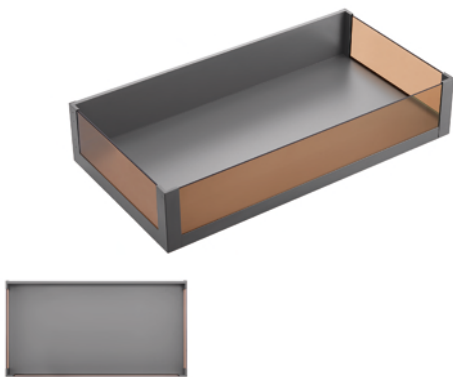
Medium Drawer Roll-out



Product Information

Item No.	*Cabinet width	Nominal length	Finish
LQ12450Q14600	600mm	450mm	Grey Matt(E30)
LQ12450Q14800	800mm	450mm	Grey Matt(E30)
LQ12450Q14900	900mm	450mm	Grey Matt(E30)

High Drawer Roll-out



Product Information

Item No.	*Cabinet width	Nominal length	Finish
LQ13450Q14600	600mm	450mm	Grey Matt(E30)
LQ13450Q14800	800mm	450mm	Grey Matt(E30)
LQ13450Q14900	900mm	450mm	Grey Matt(E30)

*Based on cabinet side = 16mm or 18mm



A variety of drawer inserts perfectly fit into the LQ series.

LQ SERIES | Storage Drawers Inserts

Multiple options for optimized storage are available for truly personal organization.

Universal Insert (B)

Item No.
LQC01-150

Width x Depth x Height
150x425x50mm



Universal Insert (H)

Item No.
LQC02-150

Width x Depth x Height
150x425x50mm



Earring & Ring Insert (B)

Item No.
LQEJ01-150

Width x Depth x Height
150x425x50mm



Earring & Ring Insert (H)

Item No.
LQEJ02-150

Width x Depth x Height
150x425x50mm



Necklace Insert (B)

Item No.
LQX01-150

Width x Depth x Height
150x425x50mm



Necklace Insert (H)

Item No.
LQX02-150

Width x Depth x Height
150x425x50mm



Ring Insert (B)

Item No.
LQJ01-150

Width x Depth x Height
150x425x50mm



Ring Insert (H)

Item No.
LQJ02-150

Width x Depth x Height
150x425x50mm



Earring Insert (B)

Item No.
LQE01-150

Width x Depth x Height
150x425x50mm



Earring Insert (H)

Item No.
LQE02-150

Width x Depth x Height
150x425x50mm



Watch Insert (B)

Item No.
LQS01-150

Width x Depth x Height
150x425x50mm



Watch Insert (H)

Item No.
LQS02-150

Width x Depth x Height
150x425x50mm



Grid Insert (B)

Item No.
LQG01-150

Width x Depth x Height
150x425x50mm



Grid Insert (H)

Item No.
LQG02-150

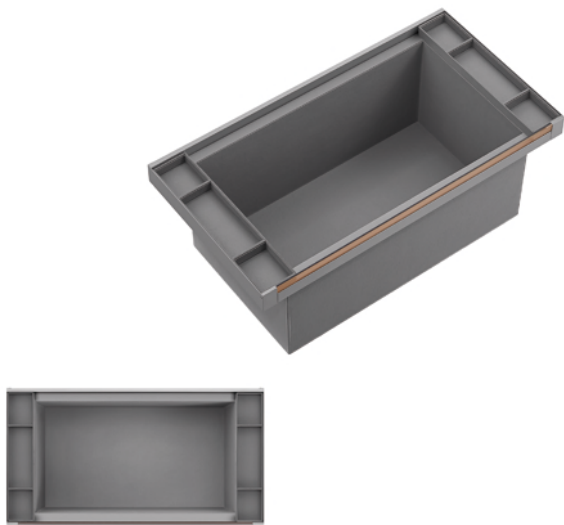
Width x Depth x Height
150x425x50mm





LK SERIES | Deep Storage Baskets

Deep Storage Baskets



Product Information

Item No.	*Cabinet width	Nominal length	Finish
LK450Q13600C01	600mm	450mm	Grey Matt(E30)
LK450Q13800C01	800mm	450mm	Grey Matt(E30)
LK450Q13900C01	900mm	450mm	Grey Matt(E30)

Insert Boxes



Product Information

Item No.	Width x Depth x Height
LK10071-62	62x425x21mm
LK10071-90	90x425x21mm

*Based on cabinet side = 16mm or 18mm



LK SERIES | Wired Shoe Racks

Wired Shoe Racks



Product Information

Item No.	*Cabinet width	Nominal length	Finish
LK450Q13600X01	600mm	450mm	Grey Matt(E30)
LK450Q13800X01	800mm	450mm	Grey Matt(E30)
LK450Q13900X01	900mm	450mm	Grey Matt(E30)

Insert Boxes



Product Information

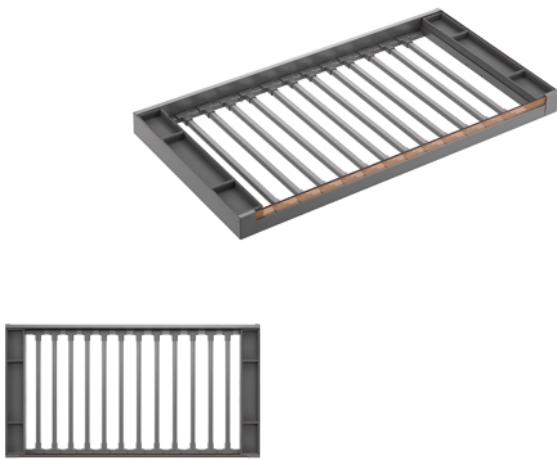
Item No.	Width x Depth x Height
LK10071-62	62x425x21mm
LK10071-90	90x425x21mm

*Based on cabinet side = 16mm or 18mm



LK SERIES | Trouser Hangers

Trouser Hangers



Product Information

Item No.	*Cabinet width	Nominal length	Finish
LK450Q13600K01	600mm	450mm	Grey Matt(E30)
LK450Q13800K01	800mm	450mm	Grey Matt(E30)
LK450Q13900K01	900mm	450mm	Grey Matt(E30)

Insert Boxes



Product Information

Item No.	Width x Depth x Height
LK10071-62	62x425x21mm
LK10071-90	90x425x21mm

*Based on cabinet side = 16mm or 18mm





LY SERIES | Dressing Mirrors

Dressing Mirrors



Product Information

	Product	Item No.	Mirror Width	Mirror Height
	Dressing Mirrors	LK340Q0900J01	340mm	900mm
		LK340Q1100J01	340mm	1100mm
	Dressing Mirrors	LK380Q0900J01	380mm	900mm
		LK380Q1100J01	380mm	1100mm
	Insert Boxes for Dressing Mirrors	LK10072-340	For Mirror Width= 340mm	
		LK10072-380	For Mirror Width= 380mm	





LY SERIES | Hanger Rails

Hanger Rails



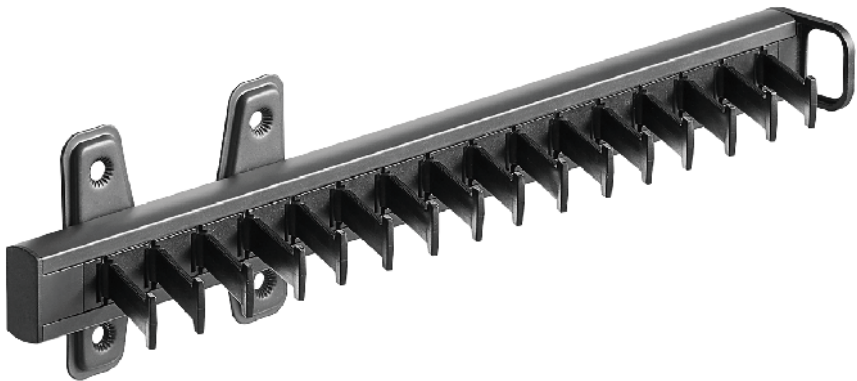
Product Information

	Product	Item No.	Size
	Hanger Rail Bases	BE04	
	Hanger Rails	BE04021	3000x29x22mm




LY SERIES | Tie Racks

Tie Racks



Product Information

Product	Item No.
 Tie Racks	LYG02150A01



LY SERIES | Password Boxes

Password Boxes



Product Information

	Product	Item No.	Size
	Password Boxes (Keypad Type)	LYM01600A01	480x400x150mm
	Password Boxes (Fingerprint Type)	LYM01600B01	480x400x150mm



LY SERIES | Lift-down Hangers

Lift-down Hangers



Product Information

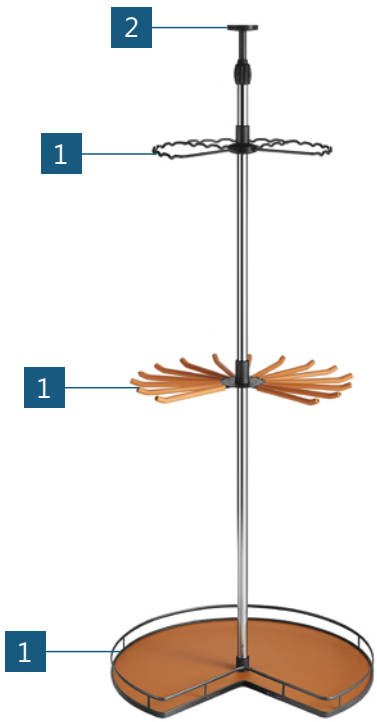
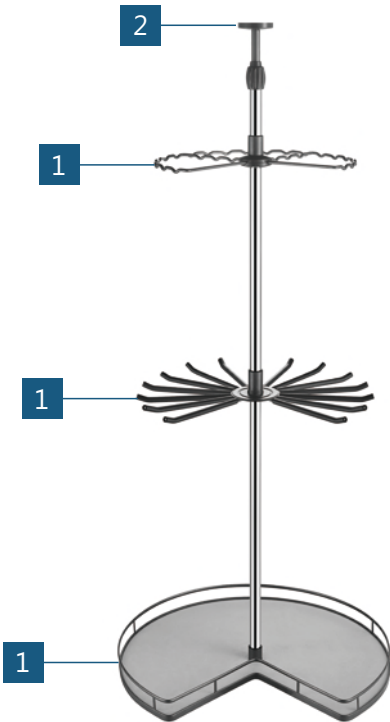
Product	Item No.	Cabinet Width	Size
Lift-down Hangers	LYG01600A01	500-600mm	(464-564)x715x355mm
Lift-down Hangers	LYG01900A01	700-900mm	(664-864)x715x355mm
Lift-down Hangers	LYG01100A01	1000-1100mm	(964-1064)x715x355mm




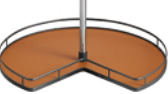


LY SERIES | Tall Corner Hangers

Tall Corner Hangers



Product Information

Product		Item No.
	1 3-level	LYZ01900B-BL(Grey)
	2 Tube	LYZ01900-K
	1 3-level	LYZ01900A-BL(Orange)
	2 Tube	LYZ01900-K




LY SERIES | Rotating Shoe Racks

Rotating Shoe Racks



Product Information

Product	Item No.	Cabinet Width
 4-level Frame	LYZ800-04L	800mm
Heavy Duty Slides	LYZ-D	
 10-level Frame	LYZ800-10L	800mm
Heavy Duty Slides	LYZ-D	

