

TRACK-PRO

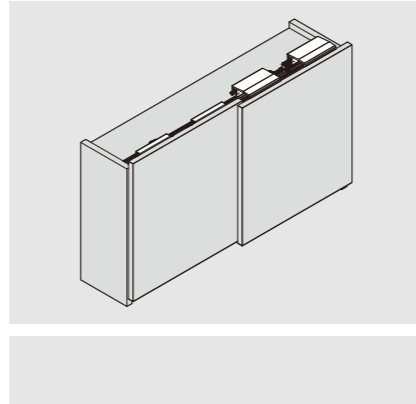
GT Series Top-running Sliding Door System

PRODUCT



DESCRIPTION

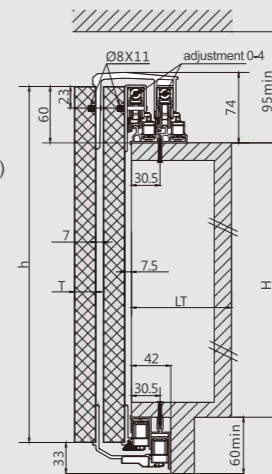
- Gentle and smooth door opening and closing thanks to patented damper design
- Effective catching mechanism prevents door disengagement
- Unique locking mechanism prevents accidental door drop-off
- Sufficient door height adjustment, convenient installation
- Door thickness application: 23mm,30mm,35mm,50mm



PLANNING

Sliding Door Installation Dimensions(mm)

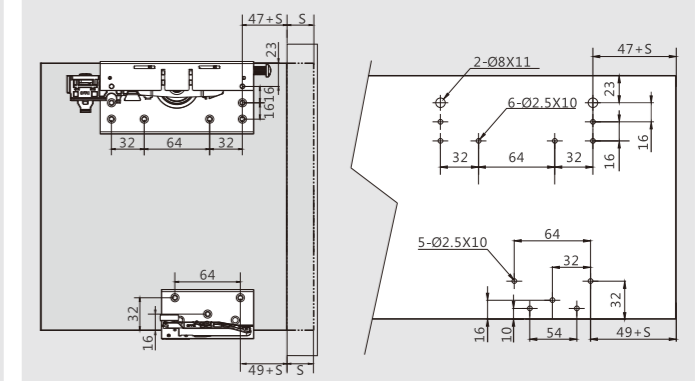
H=height from wardrobe top panel to bottom panel
 h=door height
 LT=wardrobe internal depth
 T=door thickness
 Wardrobe internal depth: LT=60(min)
 Door height:h=H+87
 Door thickness:T=23/30/35/50



The distance from top panel to ceiling is 95 at least

Sliding Door Installation Dimensions(mm)

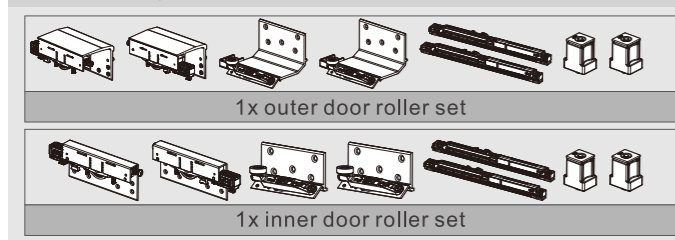
S=door overlay



GT Series Regular-type, Soft-close, Running on Top Panel

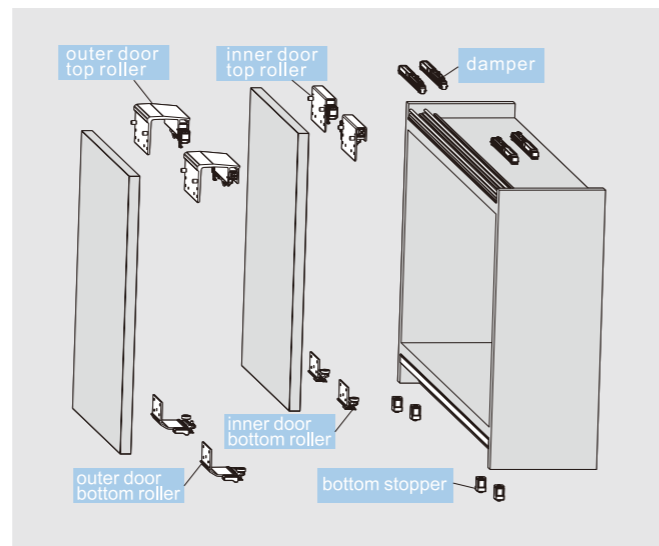
| Kit Package | | | | Kit Package | | | |
|----------------|------------------|----------|---------|----------------|------------------|----------|---------|
| Door thickness | Door Weight (KG) | Item No. | Set/ctn | Door thickness | Door Weight (KG) | Item No. | Set/ctn |
| 23mm | 5~15 | GT23HA | 6 | 30mm | 5~15 | GT30HA | 6 |
| | 15~30 | GT23HB | 6 | | 15~30 | GT30HB | 6 |
| | 30~50 | GT23HC | 6 | | 30~50 | GT30HC | 6 |
| 35mm | 5~15 | GT35HA | 6 | 50mm | 5~15 | GT50HA | 6 |
| | 15~30 | GT35HB | 6 | | 15~30 | GT50HB | 6 |
| | 30~50 | GT35HC | 6 | | 30~50 | GT50HC | 6 |

GT kit package includes:



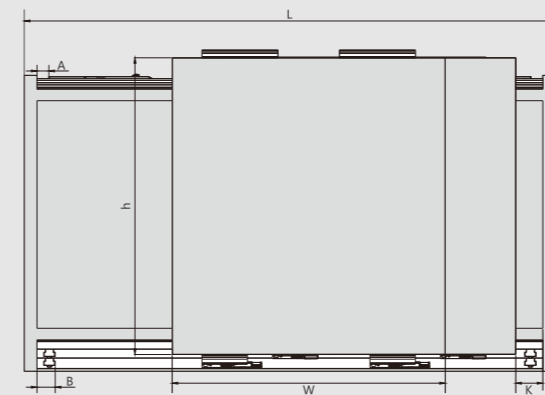
| Inner door roller set/ industrial package | | | |
|---|----------|---------|--|
| Door Weight (KG) | Item No. | Set/ctn | |
| 5~15 | GT31A | 10 | |
| 15~30 | GT31B | 10 | |
| 30~50 | GT31C | 10 | |

| Outer door roller set/industrial package | | | |
|--|------------------|----------|---------|
| Door thickness | Door Weight (KG) | Item No. | Set/ctn |
| 23mm | 5~15 | GT11A | 10 |
| | 15~30 | GT11B | 10 |
| | 30~50 | GT11C | 10 |
| 30mm | 5~15 | GT12A | 10 |
| | 15~30 | GT12B | 10 |
| | 30~50 | GT12C | 10 |
| 35mm | 5~15 | GT13A | 10 |
| | 15~30 | GT13B | 10 |
| | 30~50 | GT13C | 10 |
| 50mm | 5~15 | GT14A | 10 |
| | 15~30 | GT14B | 10 |
| | 30~50 | GT14C | 10 |



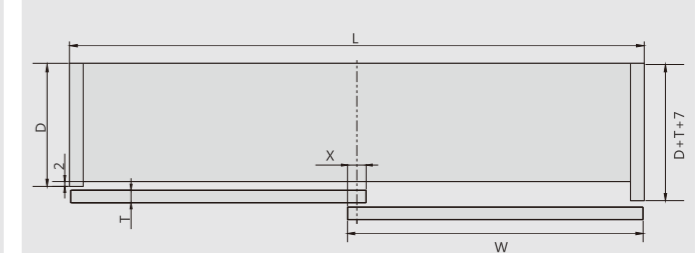
Sliding Door Installation Dimensions(mm)

A=damper installation dimension A=8
 B=bottom stopper installation dimension B=36

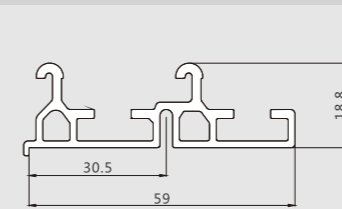


Sliding Door Installation Dimensions(mm)

W=door width Door Width: W=L/2+(X/2)
 L=wardrobe external width



Top Track Installation Dimensions(mm)

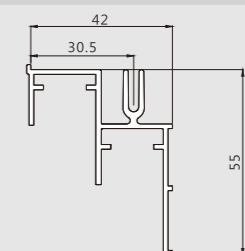


Top Track / Industrial package
 Silver white (F98)

| Item No. | Pcs/ctn |
|----------|---------|
| GTDG01 | 10 |

Length : 6 meters

Bottom Track Installation Dimensions(mm)



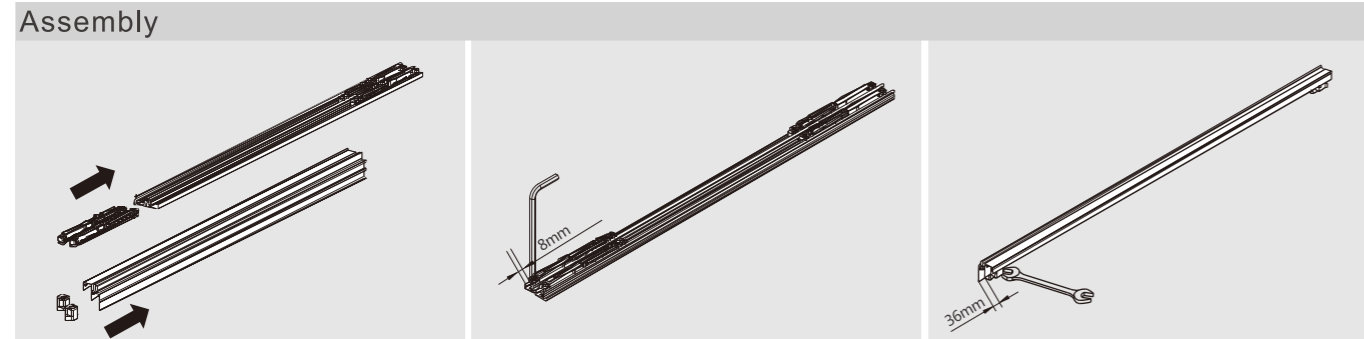
Bottom Track / Industrial package
 Silver white (F98)

| Item No. | Pcs/ctn |
|----------|---------|
| GTDG02 | 10 |

Length : 6 meters

ASSEMBLY AND ADJUSTMENT

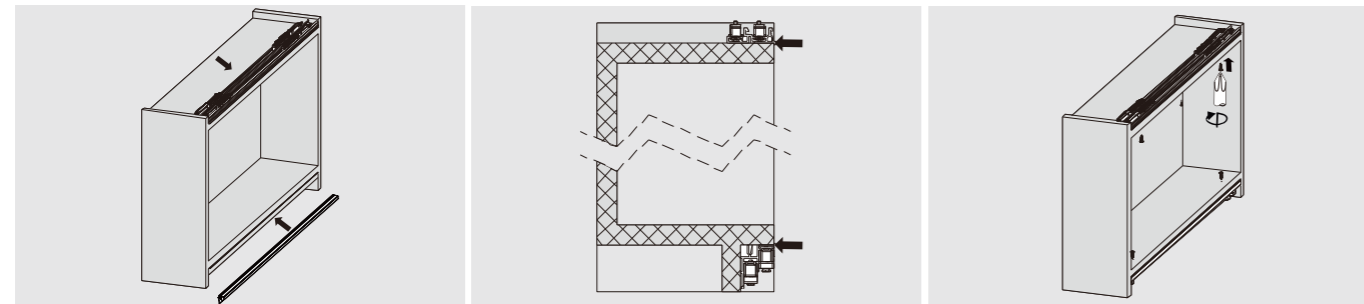
Assembly And Adjustment (For GT Series Regular-type Soft-close Top-running Sliding Door System)



Insert the damper into top track
Insert the bottom stopper into bottom track

Fix the damper with 3mm allen key

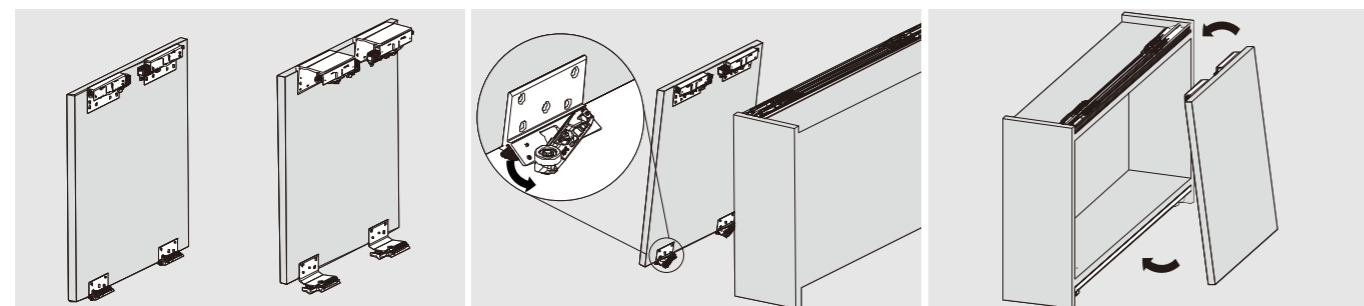
Fix the bottom stopper with 8mm spanner



Install the top and bottom tracks

Flush the tracks with the outer surface of the top and bottom panels

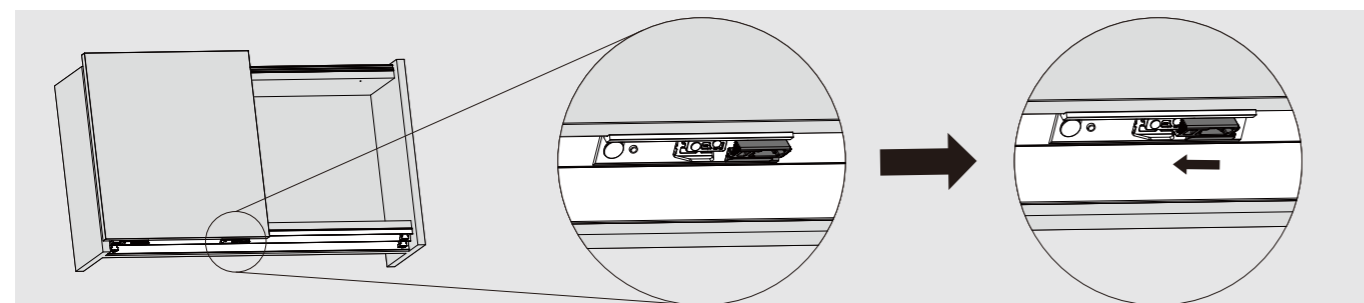
Fix the screw



Install top and bottom rollers onto outer and inner doors

Disengage the locking device on bottom roller before mounting the inner door

Mount the inner door



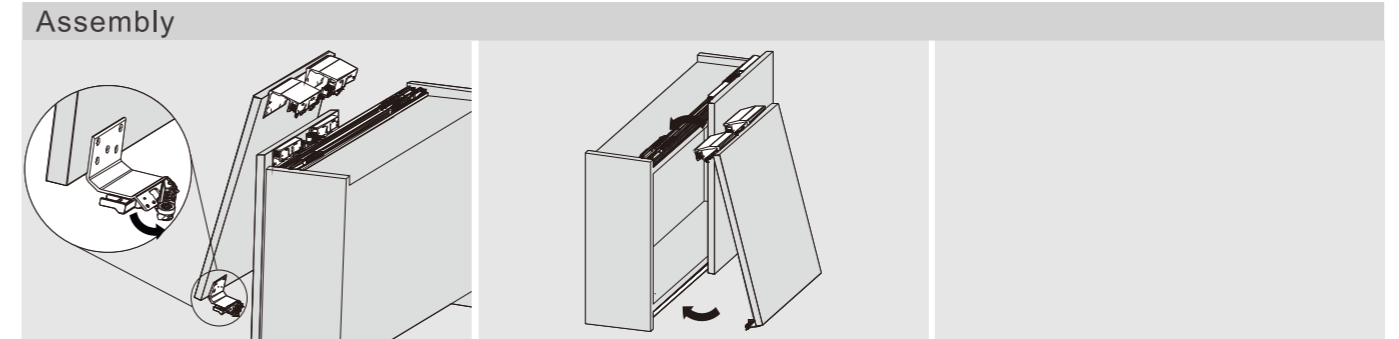
Engage the locking device on bottom roller after mounting the inner door on wardrobe

"Disengaged position" of locking device on bottom roller

"Engaged position" of locking device on bottom roller

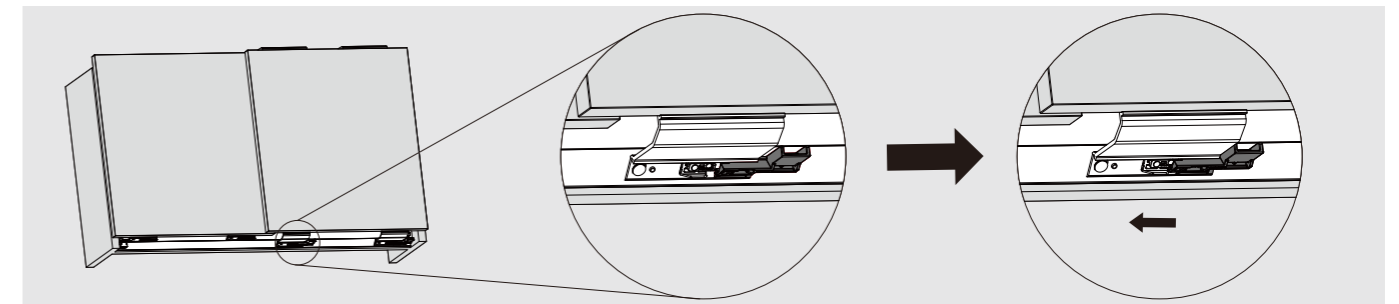
ASSEMBLY AND ADJUSTMENT

Assembly And Adjustment (For GT Series Regular-type Soft-close Top-running Sliding Door System)



Disengage the locking device on bottom roller before mounting the outer door

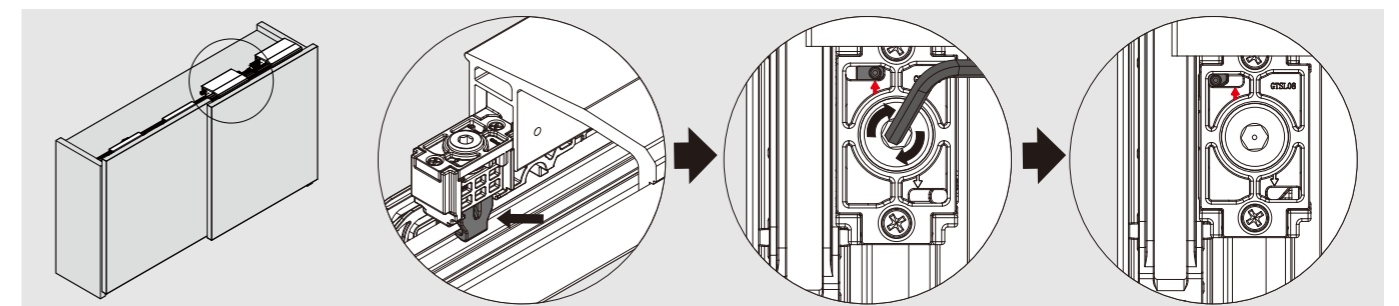
Mount the outer door



Engage the locking device on bottom roller before mounting the outer door

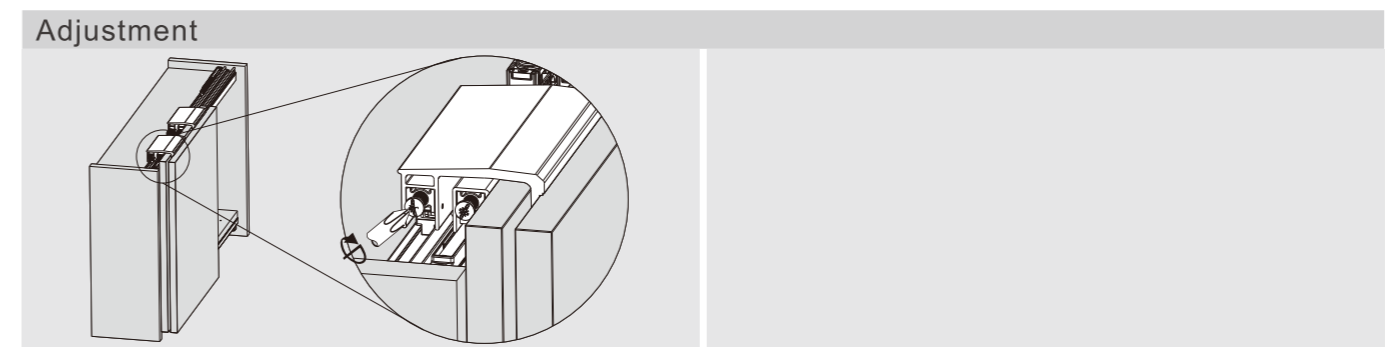
"Disengaged position" of locking device on bottom roller

"Engaged position" of locking device on bottom roller



Engage the locking device on top rollers of outer and inner door

Turn the screw clockwise with a 3mm allen key to engage the locking devices on the top rollers of the outer and inner doors



Level the outer and inner doors

TRACK-PRO

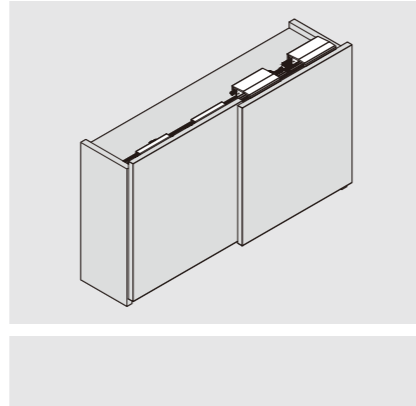
GT Series Top-running Sliding Door System

PRODUCT



DESCRIPTION

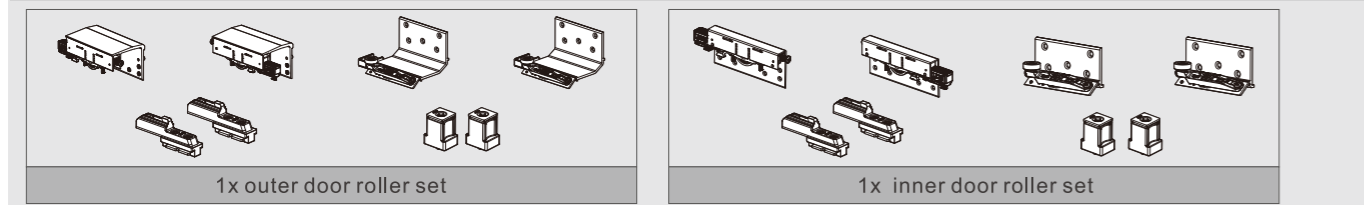
- Unique locking mechanism prevents accidental door drop-off
- Sufficient door height adjustment, convenient installation
- Door thickness application: 23mm,30mm,35mm,50mm



GT Series Regular-type, Non-soft-close Top-running Sliding Door

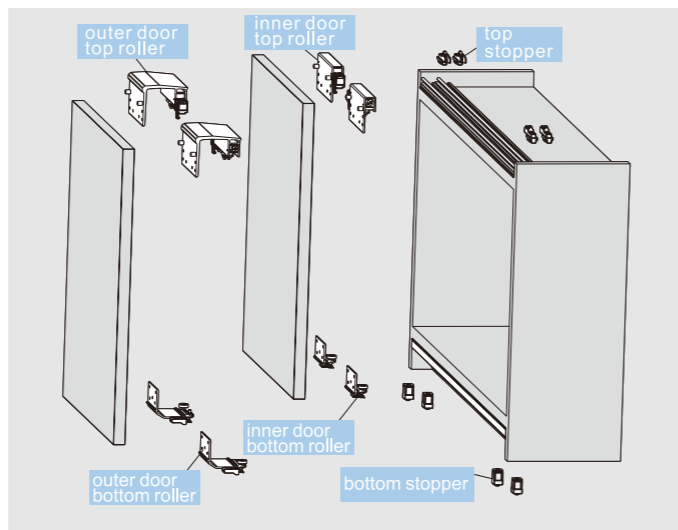
| Kit Package | | | |
|-----------------|----------|---------|--|
| Door Weight(KG) | Item No. | Set/ctn | |
| 23mm | GT23W | 6 | |
| 30mm | GT30W | 6 | |
| 35mm | GT35W | 6 | |
| 50mm | GT50W | 6 | |

GT kit package includes:



| 1 Outer door roller set/ industrial package | | | |
|---|----------|---------|--|
| Door thickness | Item No. | Set/ctn | |
| 23mm | GT01 | 10 | |
| 30mm | GT02 | 10 | |
| 35mm | GT03 | 10 | |
| 50mm | GT04 | 10 | |

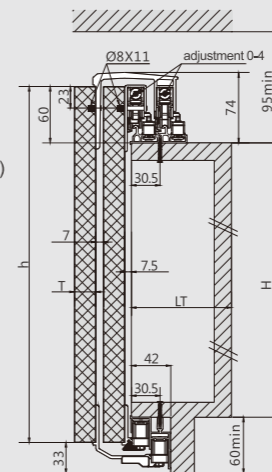
| 2 Inner door roller set/ industrial package | | | |
|---|---------|--|--|
| Item No. | Set/ctn | | |
| GT21 | 10 | | |



PLANNING

Sliding Door Installation Dimensions(mm)

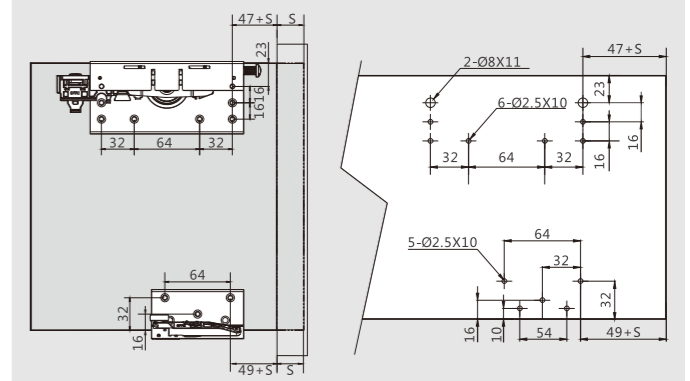
H=height from wardrobe top panel to bottom panel
 h=door height
 LT=wardrobe internal depth
 T=door thickness
 Wardrobe internal depth: LT=60(min)
 Door height:h=H+87
 Door thickness:T=23/30/35/50



The distance from top panel to ceiling is 95 at least

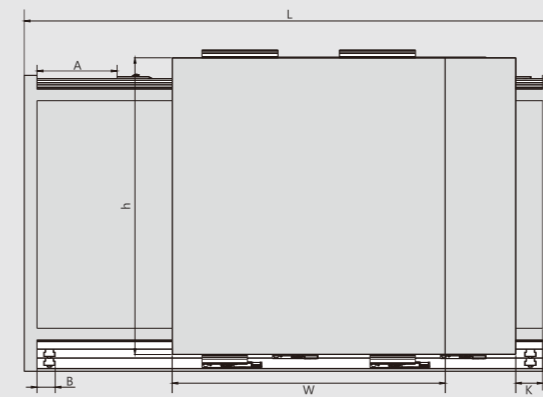
Sliding Door Installation Dimensions(mm)

S=door overlay



Sliding Door Installation Dimensions(mm)

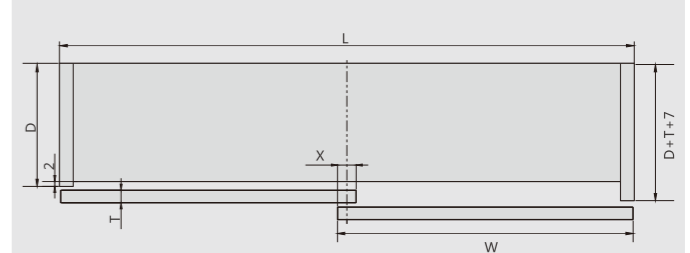
A=upper stopper installation dimensions A=106
 B=bottom stopper installation dimension B=36



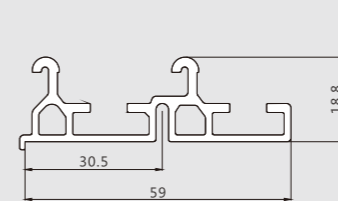
Door self closing distance K=50

Sliding Door Installation Dimensions(mm)

W=door width Door Width: W=L/2+(X/2)
 L=wardrobe external width



Top Track Installation Dimensions(mm)

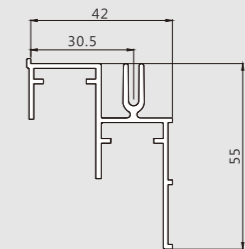


Top Track / Industrial package
 Silver white (F98)

| Item No. | Pcs/ctn |
|----------|---------|
| GTDG01 | 10 |

Length : 6 meters

Bottom Track Installation Dimensions(mm)



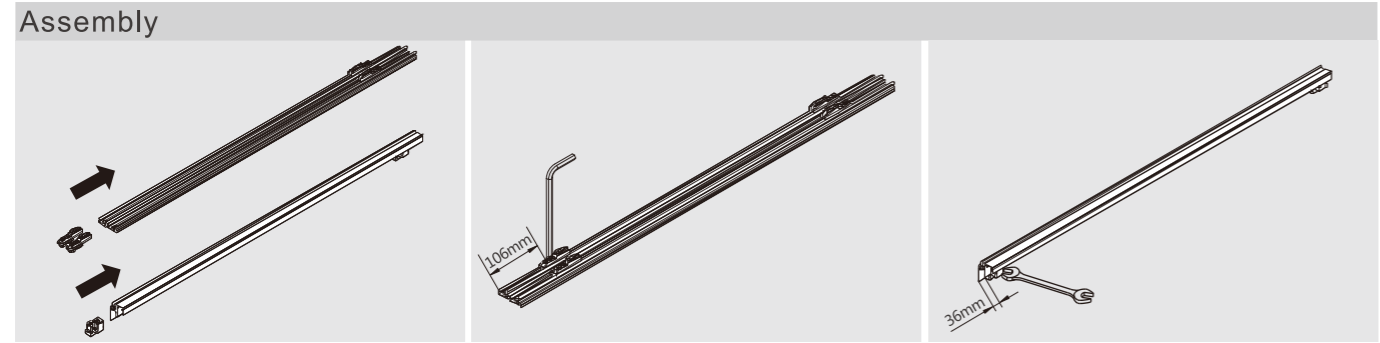
Bottom Track / Industrial package
 Silver white (F98)

| Item No. | Pcs/ctn |
|----------|---------|
| GTDG02 | 10 |

Length : 6 meters

ASSEMBLY AND ADJUSTMENT

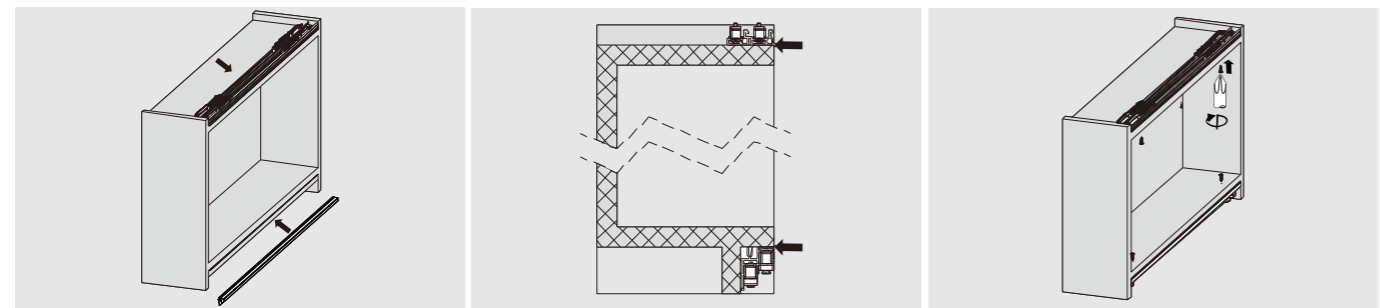
Assembly And Adjustment (For GT Series Regular-type Non-soft-close Top-running Sliding Door System)



Insert the upper stopper into top track
Insert the bottom stopper into bottom track

Fix the top stopper with a 3mm allen key

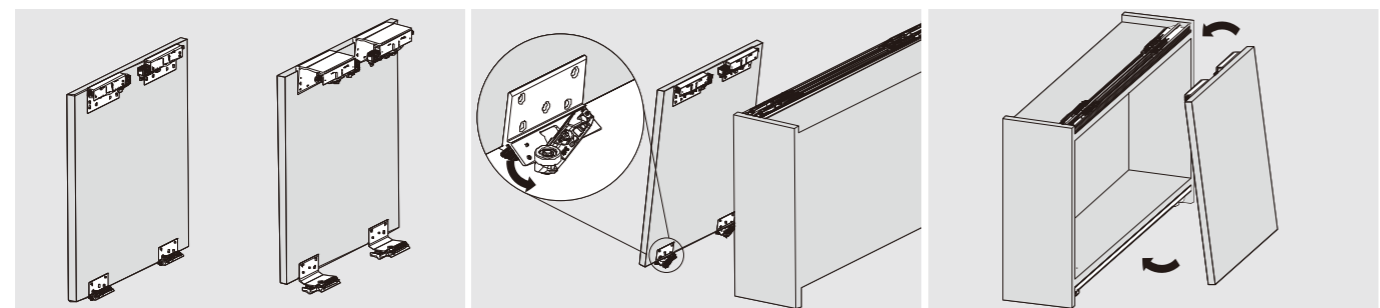
Fix the bottom stopper with an 8mm spanner



Install the top and bottom tracks

Flush the tracks with the outer surface of the top and bottom panels

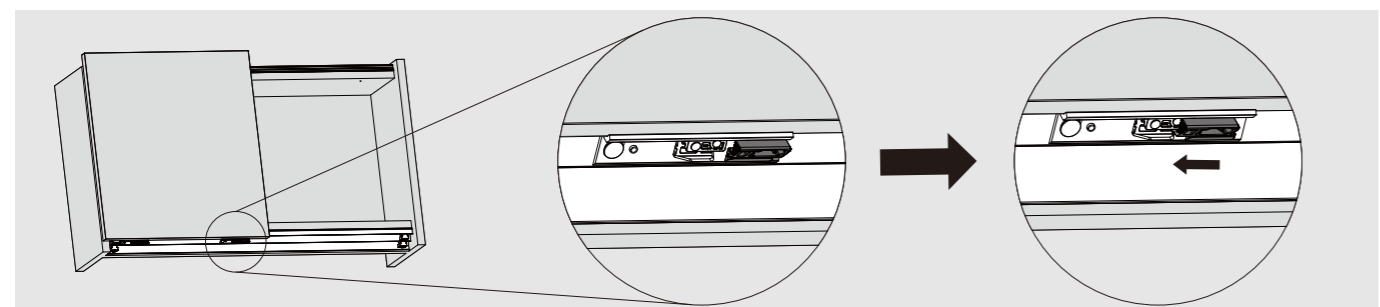
Fix the screw



Install top and bottom rollers onto outer and inner doors

Disengage the locking device on bottom roller before mounting the inner door

Mount the inner door



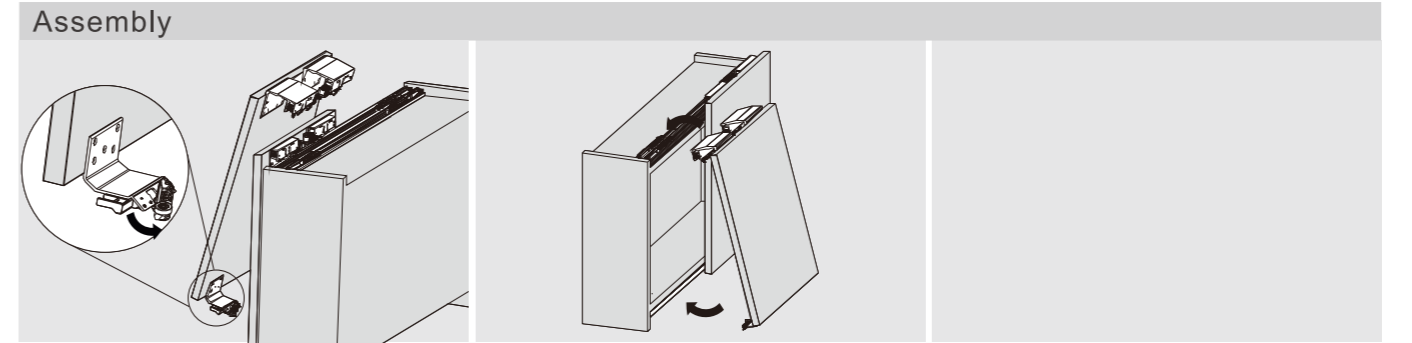
Engage the locking device on bottom roller after mounting the inner door on wardrobe

"Disengaged position" of locking device on bottom roller

"Engaged position" of locking device on bottom roller

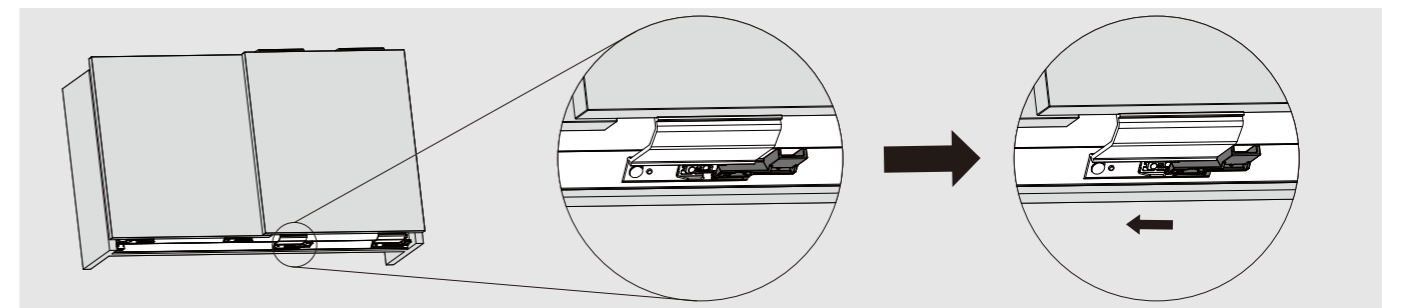
ASSEMBLY AND ADJUSTMENT

Assembly And Adjustment (For GT Series Regular-type Non-soft-close Top-running Sliding Door System)



Disengage the locking device on bottom roller before mounting the outer door

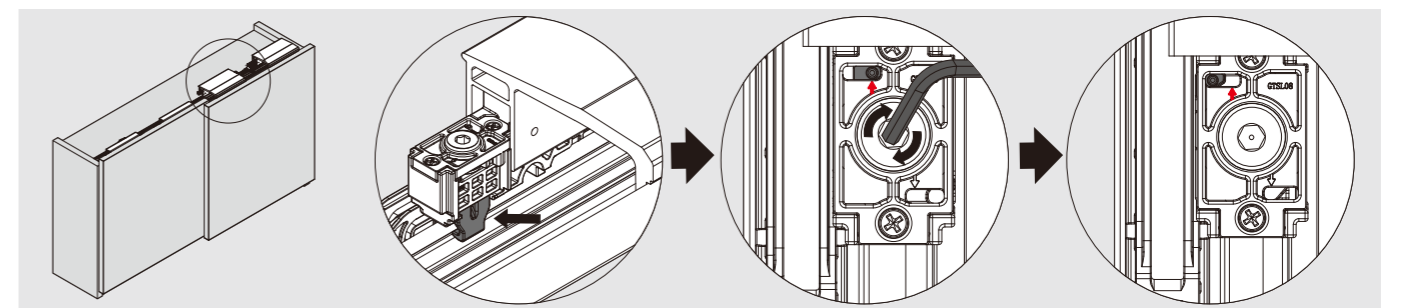
Mount the outer door



Engage the locking device on bottom roller before mounting the outer door

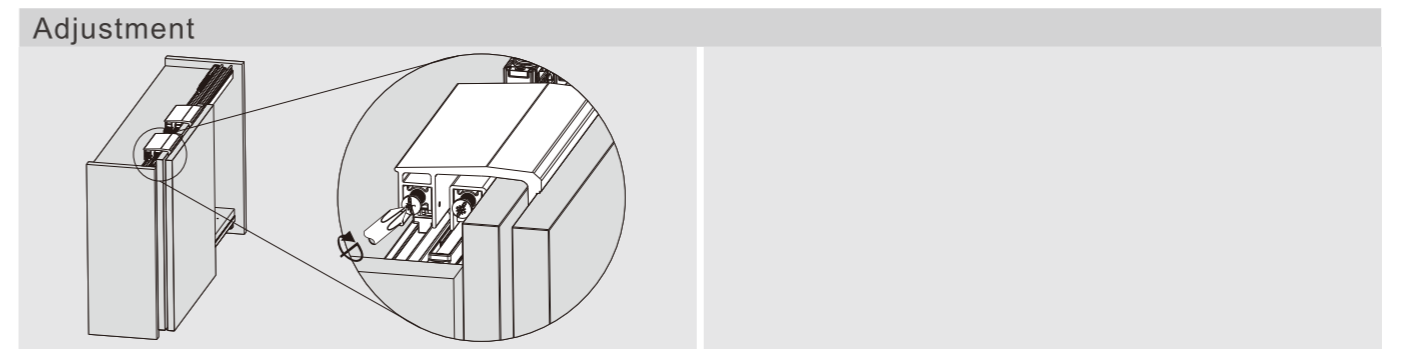
"Disengaged position" of locking device on bottom roller

"Engaged position" of locking device on bottom roller



Engage the locking device on top rollers of outer and inner door

Turn the screw clockwise with a 3mm allen key to engage the locking devices on the top rollers of the outer and inner doors



Level the outer and inner doors

TRACK-PRO

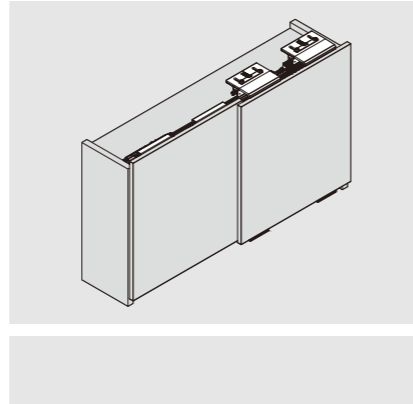
GT Series Top-running Sliding Door System

PRODUCT



DESCRIPTION

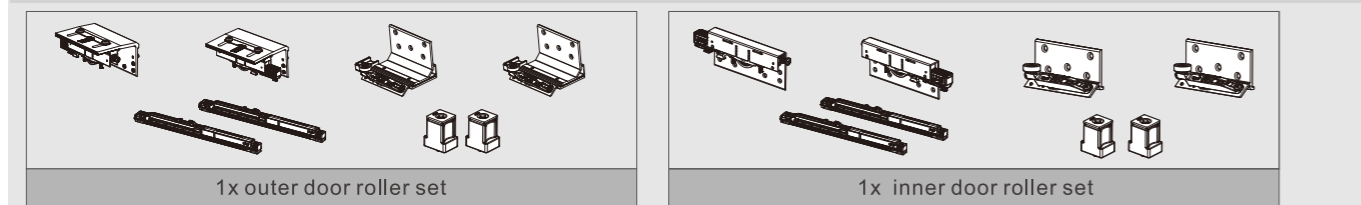
- Gentle and smooth door opening and closing thanks to patented damper design
- Effective catching mechanism prevents door disengagement
- Unique locking mechanism prevents accidental door drop-off
- Sufficient door height adjustment, convenient installation
- Door thickness application: 18~50mm



GT Series Adjustable-type, Soft-close, Running on Top Panel

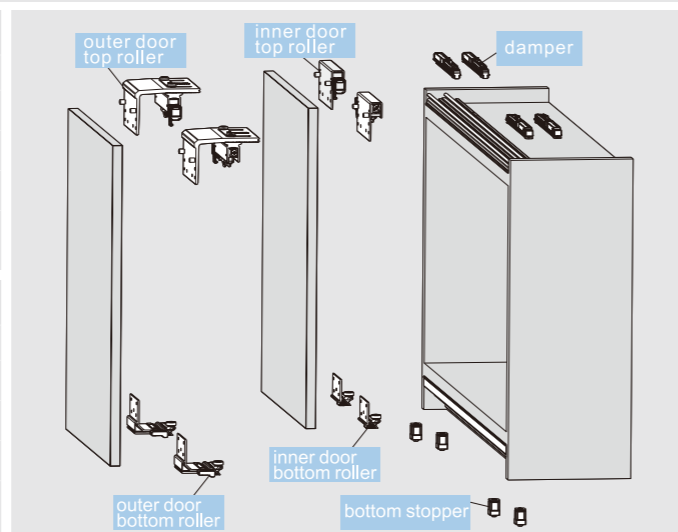
| Kit Package | | | |
|----------------|------------------|----------|---------|
| Door thickness | Door Weight (KG) | Item No. | Set/ctn |
| 18-50(mm) | 5-15 | GT1850HA | 6 |
| | 15-30 | GT1850HB | 6 |
| | 30-50 | GT1850HC | 6 |

GT kit package includes:



| 1 Outer door roller set/ industrial package | | | |
|---|----------|---------|--|
| Door thickness | Item No. | Set/ctn | |
| 5-15 | GT51A | 10 | |
| 15-30 | GT51B | 10 | |
| 30-50 | GT51C | 10 | |

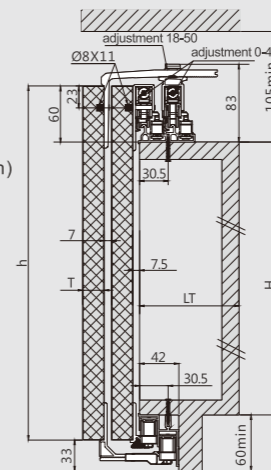
| 2 Inner door roller set/ industrial package | | | |
|---|----------|---------|--|
| Door thickness | Item No. | Set/ctn | |
| 5-15 | GT31A | 10 | |
| 15-30 | GT31B | 10 | |
| 30-50 | GT31C | 10 | |



PLANNING

Sliding Door Installation Dimensions(mm)

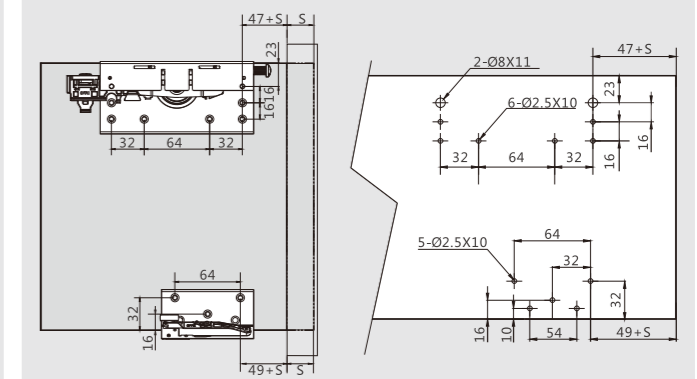
H=height from wardrobe top panel to bottom panel
 h=door height
 LT=wardrobe internal depth
 T=door thickness
 Wardrobe internal depth: LT=135(min)
 Door height:h=H+87
 Door thickness:T= 18~50



The distance from top panel to ceiling is 105 at least

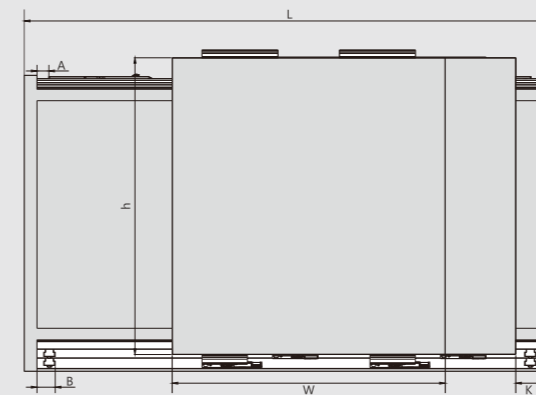
Sliding Door Installation Dimensions(mm)

S=door overlay



Sliding Door Installation Dimensions(mm)

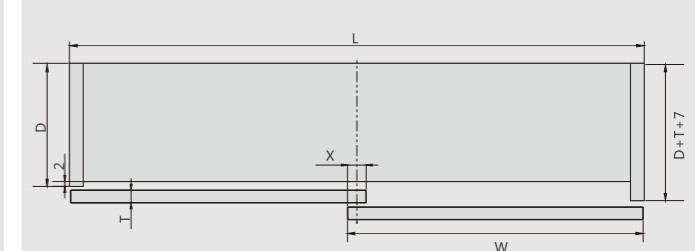
A=damper installation dimension A=8
 B=bottom stopper installation dimension B=36



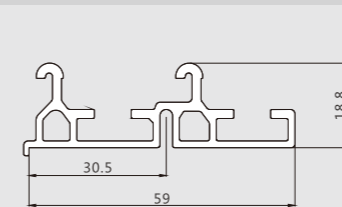
Door self closing distance K=50

Sliding Door Installation Dimensions(mm)

W=door width Door Width: W=L/2+(X/2)
 L=wardrobe external width



Top Track Installation Dimensions(mm)



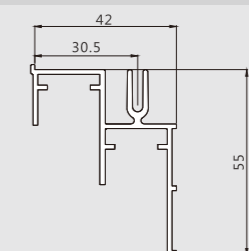
Top Track / Industrial package

Silver white (F98)

| Item No. | Pcs/ctn |
|----------|---------|
| GTDG01 | 10 |

Length : 6 meters

Bottom Track Installation Dimensions(mm)



Bottom Track / Industrial package

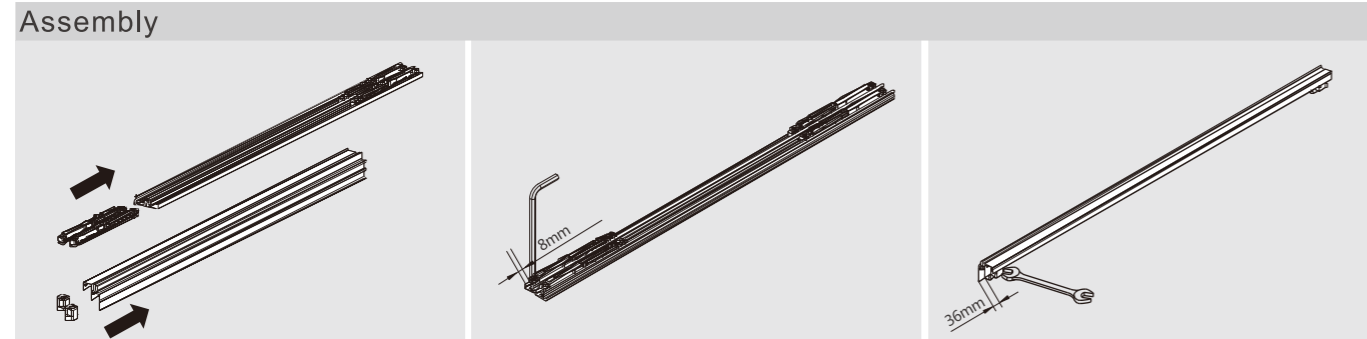
Silver white (F98)

| Item No. | Pcs/ctn |
|----------|---------|
| GTDG02 | 10 |

Length : 6 meters

ASSEMBLY AND ADJUSTMENT

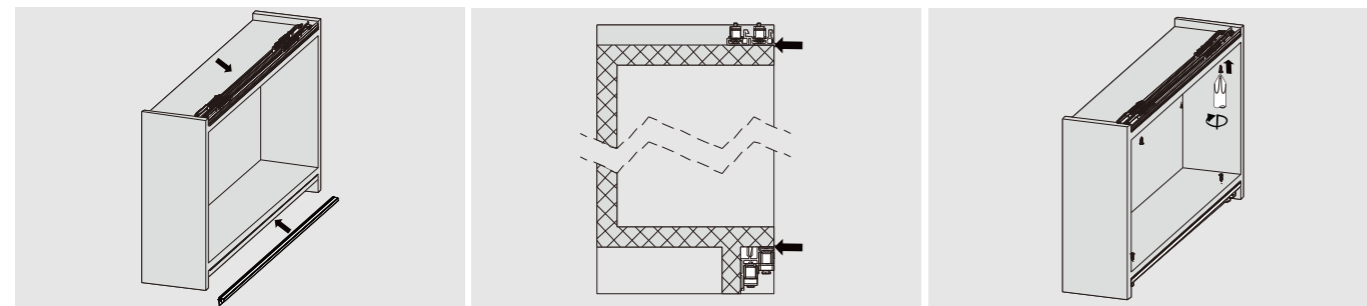
Assembly And Adjustment (For GT Series Adjustable-type Soft-close Top-running Sliding Door System)



Insert the damper into top track
Insert the bottom stopper into bottom track

Fix the damper with 3mm allen key

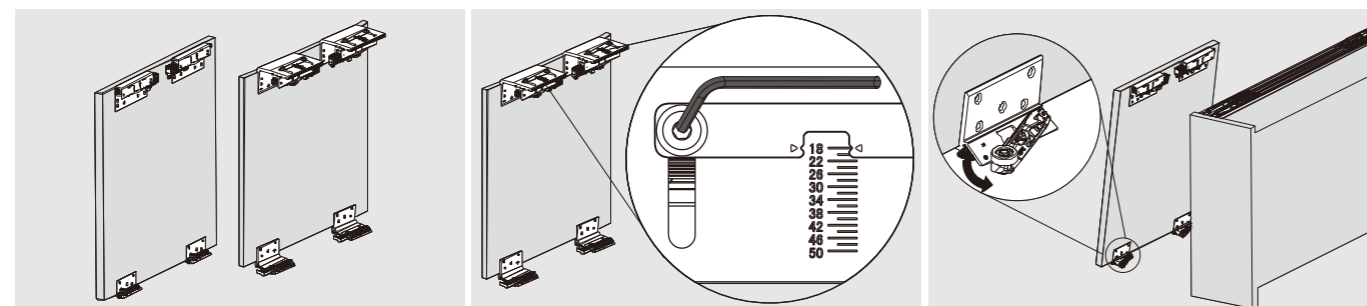
Fix the bottom stopper with 8mm spanner



Install the top and bottom tracks

Flush the tracks with the outer surface of the top and bottom panels

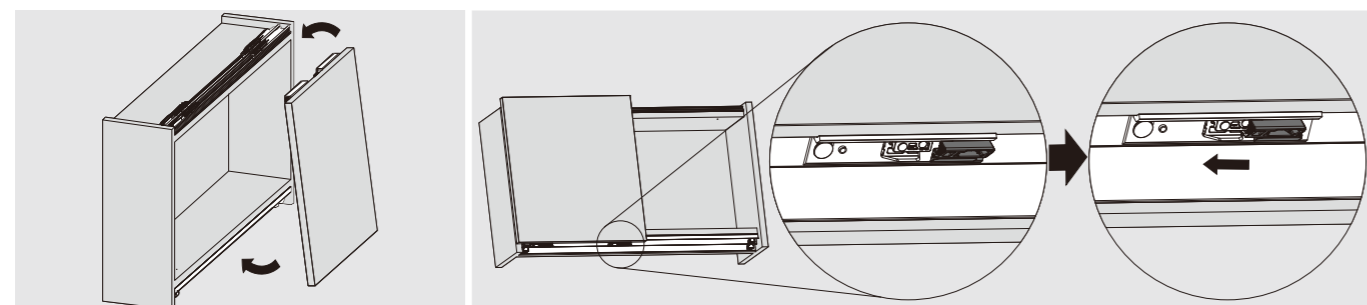
Fix the screw



Install top and bottom rollers onto outer and inner doors

Choose your door thickness

Disengage the locking device on bottom roller before mounting the inner door



Mount the inner door

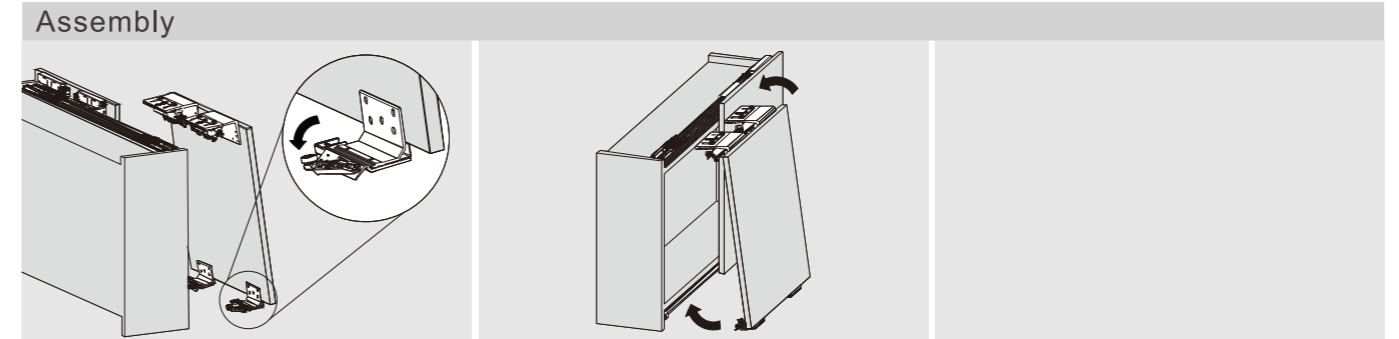
Engage the locking device on bottom roller after mounting the inner door on wardrobe

"Disengaged position" of locking device on bottom roller

"Engaged position" of locking device on bottom roller

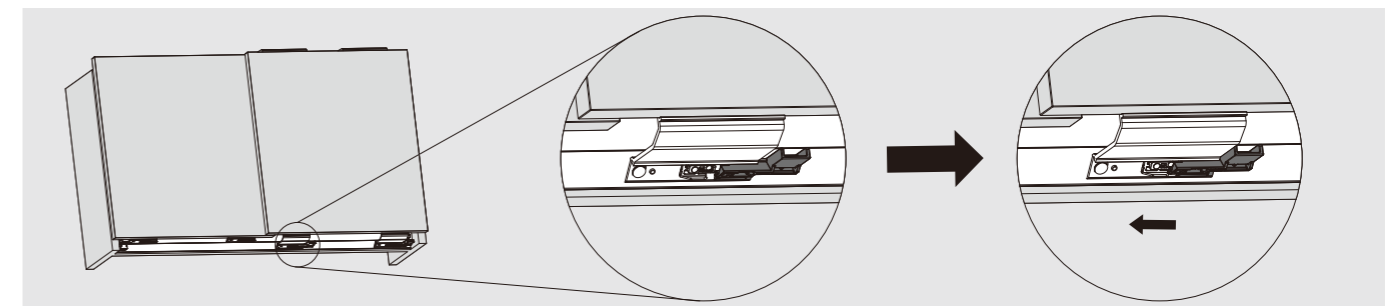
ASSEMBLY AND ADJUSTMENT

Assembly And Adjustment (For GT Series Adjustable-type Soft-close Top-running Sliding Door System)



Disengage the locking device on bottom roller before mounting the outer door

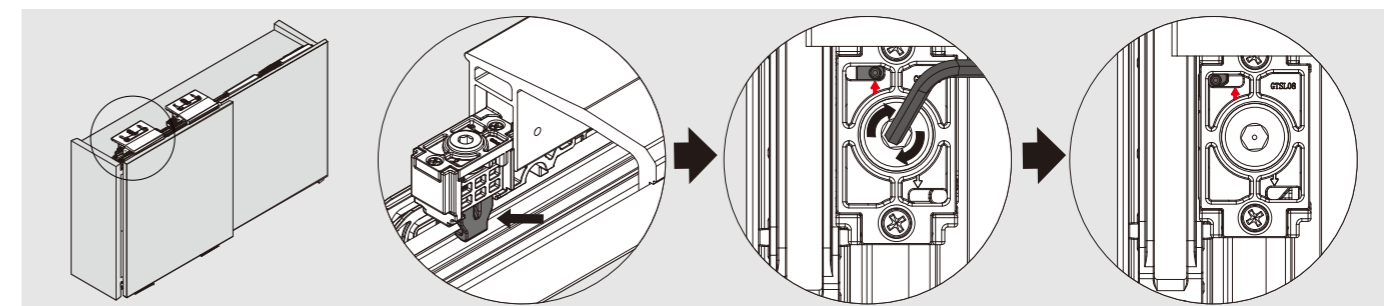
Mount the outer door



Engage the locking device on bottom roller before mounting the outer door

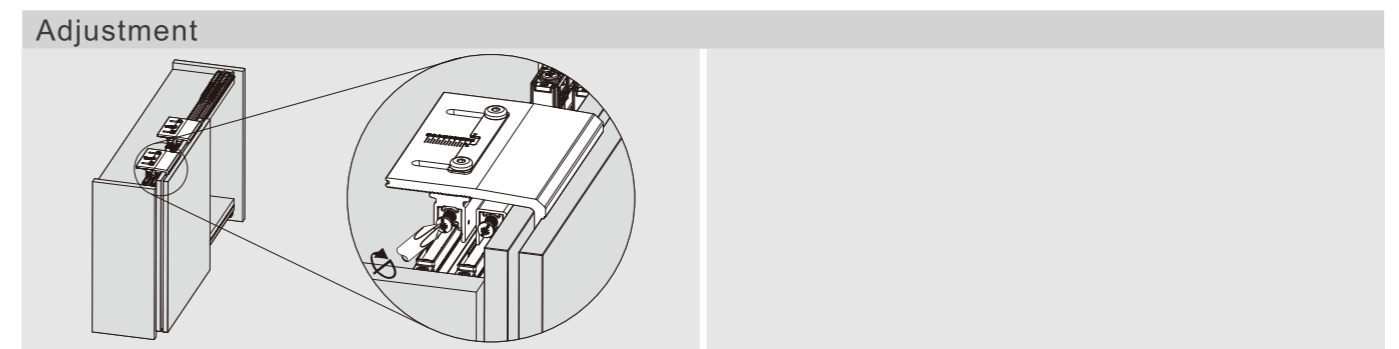
"Disengaged position" of locking device on bottom roller

"Engaged position" of locking device on bottom roller



Engage the locking device on top rollers of outer and inner door

Turn the screw clockwise with a 3mm allen key to engage the locking devices on the top rollers of the outer and inner doors



Level the outer and inner doors

TRACK-PRO

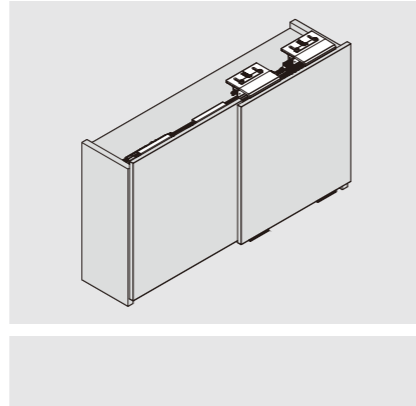
GT Series Top-running Sliding Door System

PRODUCT



DESCRIPTION

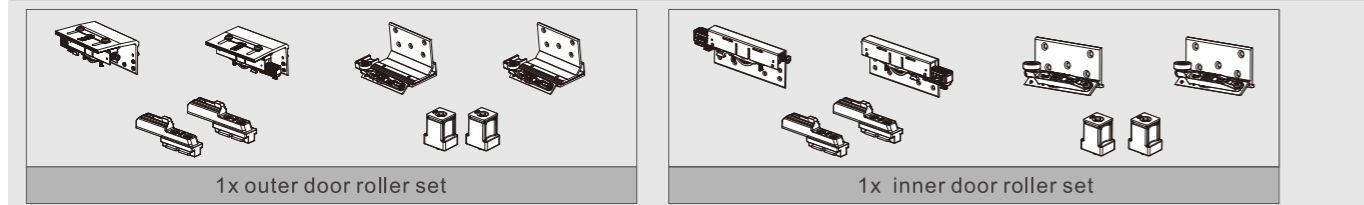
- Unique door anti-drop device, ensure extremity security
- Unique locking mechanism prevents accidental door drop-off
- Door thickness application: 18~50mm



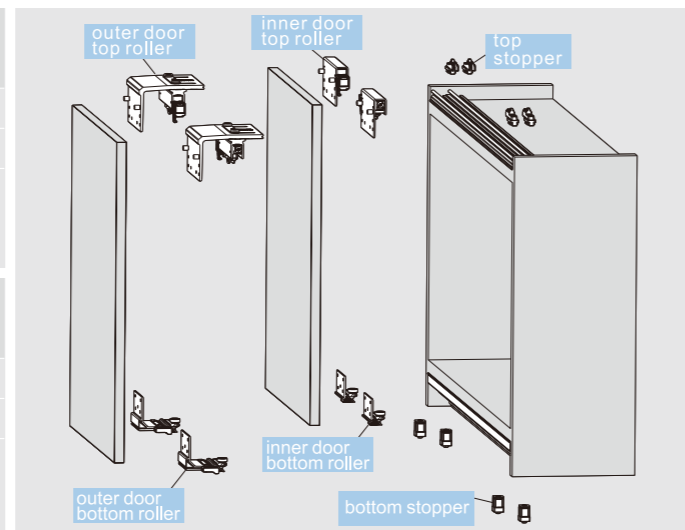
GT Series Adjustable-type, Non-soft-close Top-running Sliding Door

| Kit Package | | | |
|----------------|----------|---------|--|
| Door thickness | Item No. | Set/ctn | |
| 15-50(mm) | GT1850W | 6 | |

GT kit package includes:



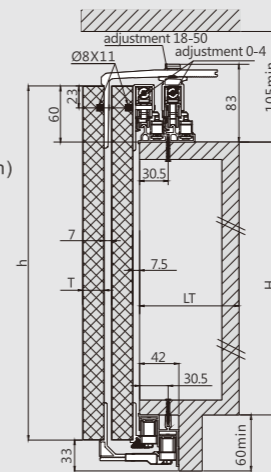
| | | | |
|---|--|---------|--|
| 1 | Outer door roller set/ industrial package | | |
| | Item No. | Set/ctn | |
| | GT41 | 10 | |
| 2 | Inner door roller set/ industrial package | | |
| | Item No. | Set/ctn | |
| | GT21 | 10 | |



PLANNING

Sliding Door Installation Dimensions(mm)

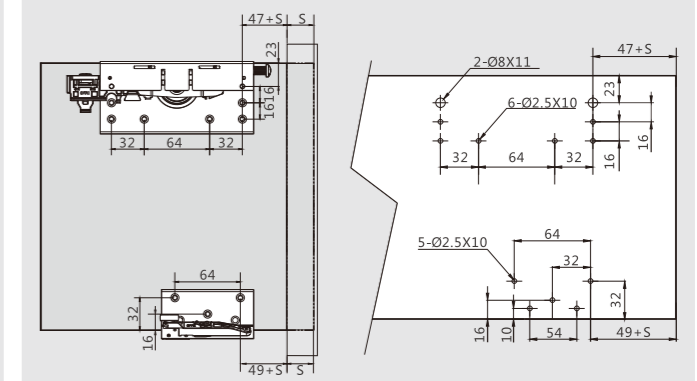
H=height from wardrobe top panel to bottom panel
 h=door height
 LT=wardrobe internal depth
 T=door thickness
 Wardrobe internal depth: LT=135(min)
 Door height:h=H+87
 Door thickness:T= 18~50



The distance from top panel to ceiling is 105 at least

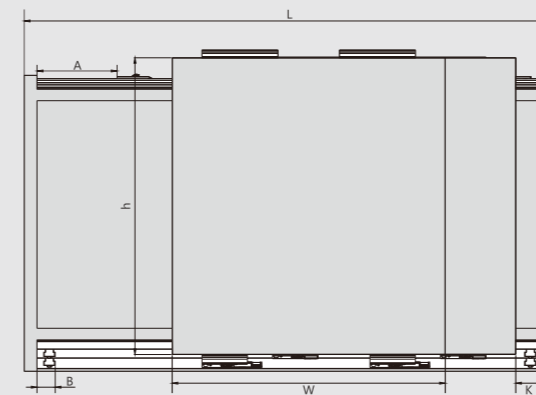
Sliding Door Installation Dimensions(mm)

S=door overlay



Sliding Door Installation Dimensions(mm)

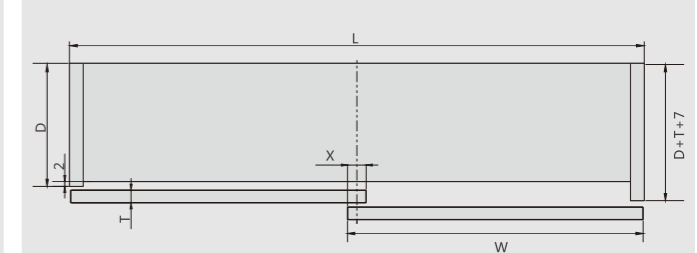
A=damper installation dimension A=106
 B=bottom stopper installation dimension B=36



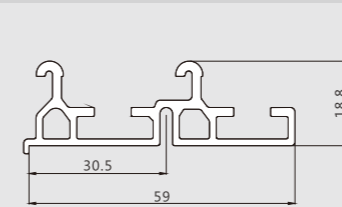
Door self closing distance K=50

Sliding Door Installation Dimensions(mm)

W=door width Door Width: W=L/2+(X/2)
 L=wardrobe external width



Top Track Installation Dimensions(mm)

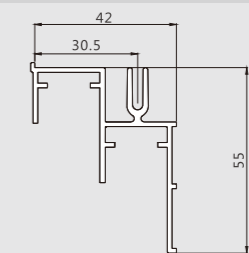


Top Track / Industrial package
 Silver white (F98)

| | |
|----------|---------|
| Item No. | Pcs/ctn |
| GTDG01 | 10 |

Length : 6 meters

Bottom Track Installation Dimensions(mm)



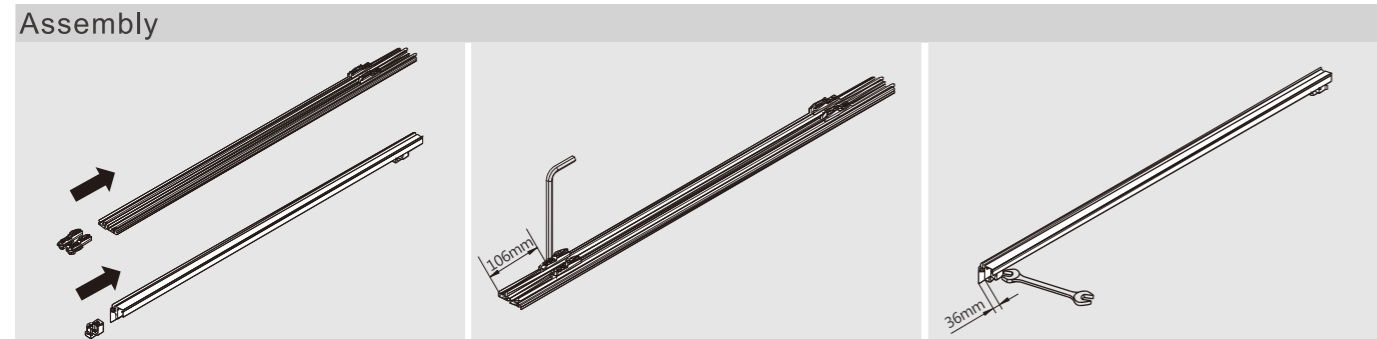
Bottom Track / Industrial package
 Silver white (F98)

| | |
|----------|---------|
| Item No. | Pcs/ctn |
| GTDG02 | 10 |

Length : 6 meters

ASSEMBLY AND ADJUSTMENT

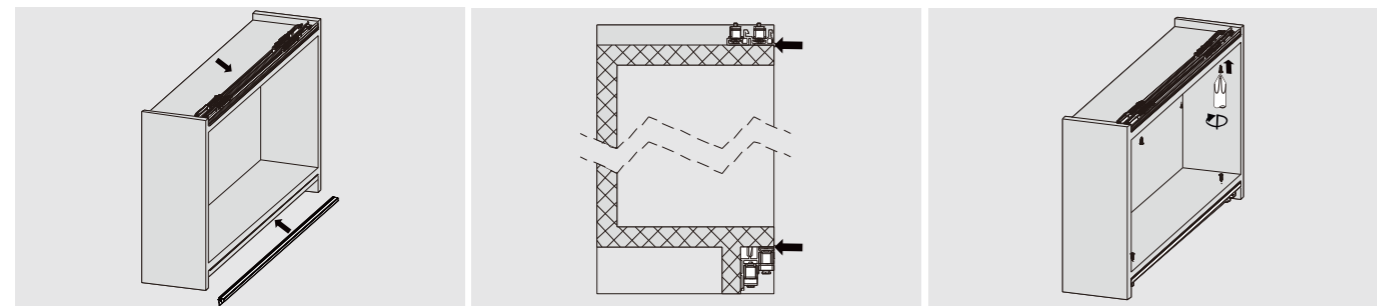
Assembly And Adjustment (For GT Series Adjustable-type Non-soft-close Top-running Sliding Door System)



insert the top stopper into top track
Insert the bottom stopper into bottom track

Fix the top stopper with a 3mm allen key

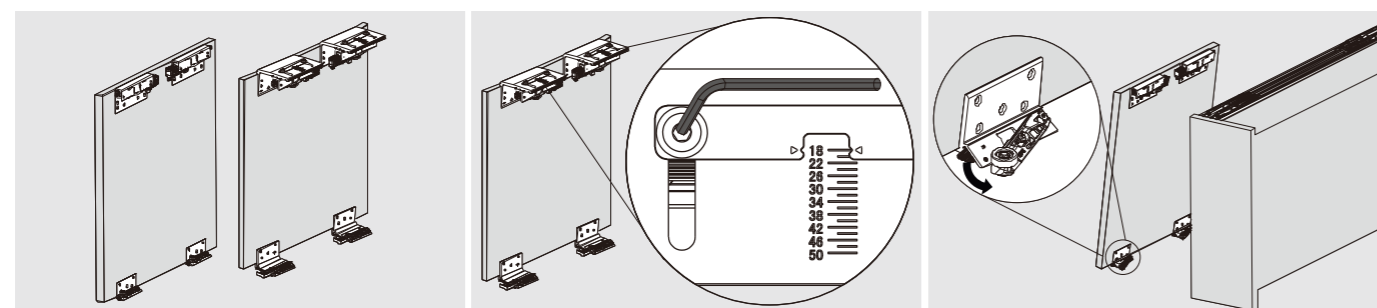
Fix the bottom stopper with an 8mm spanner



Install the top and bottom tracks

Flush the tracks with the outer surface of the top and bottom panels

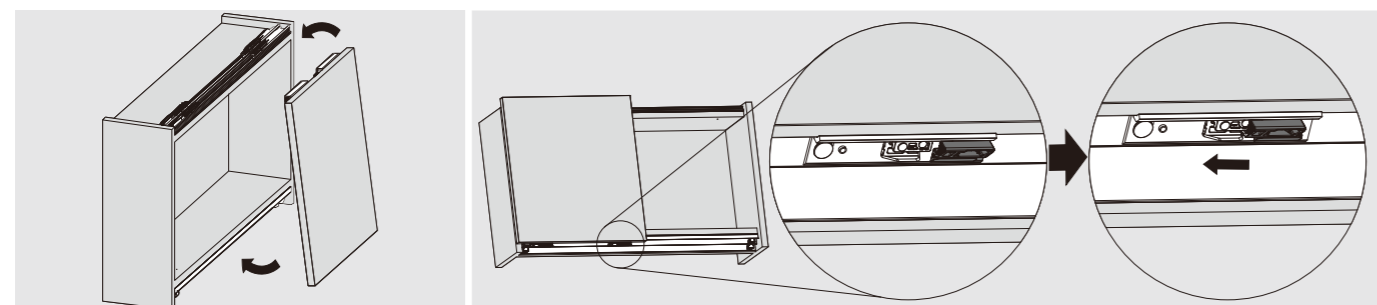
Fix the screw



Install top and bottom rollers onto outer and inner doors

Choose your door thickness

Disengage the locking device on bottom roller before mounting the inner door



Mount the inner door

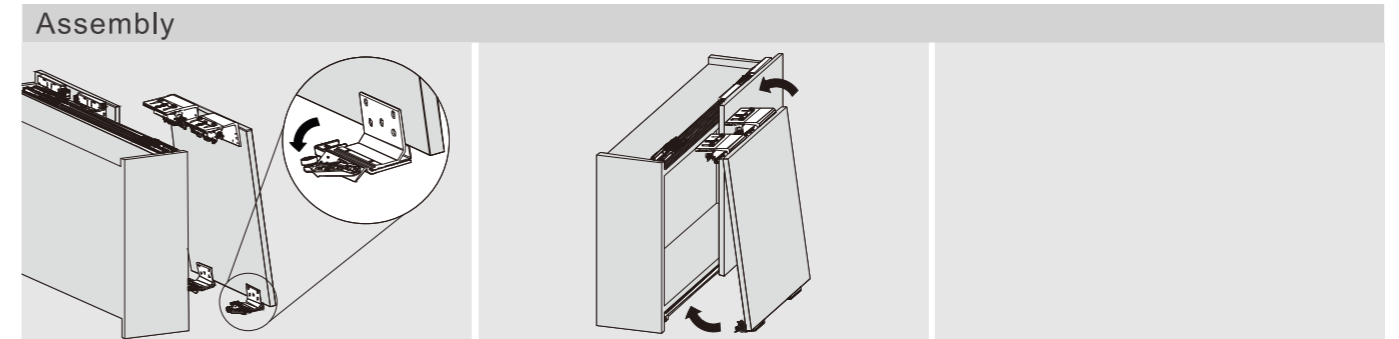
Engage the locking device on bottom roller after mounting the inner door on wardrobe

"Disengaged position" of locking device on bottom roller

"Engaged position" of locking device on bottom roller

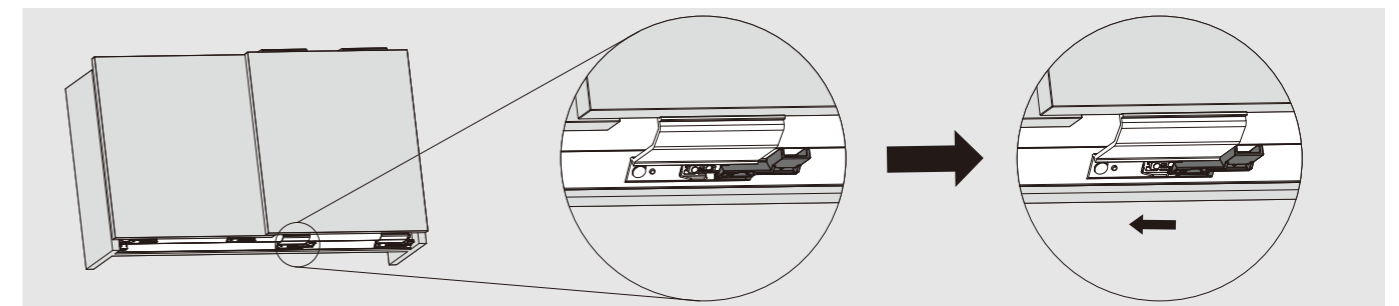
ASSEMBLY AND ADJUSTMENT

Assembly And Adjustment (For GT Series Adjustable-type Non-soft-close Top-running Sliding Door System)



Disengage the locking device on bottom roller before mounting the outer door

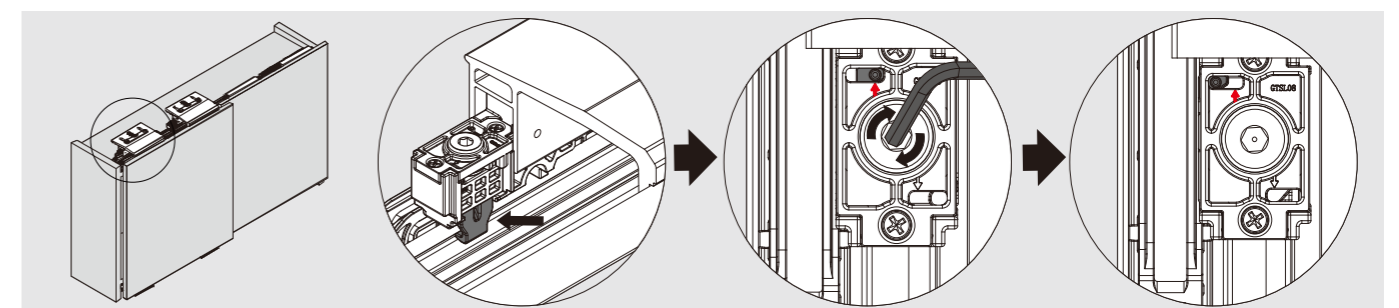
Mount the outer door



Engage the locking device on bottom roller before mounting the outer door

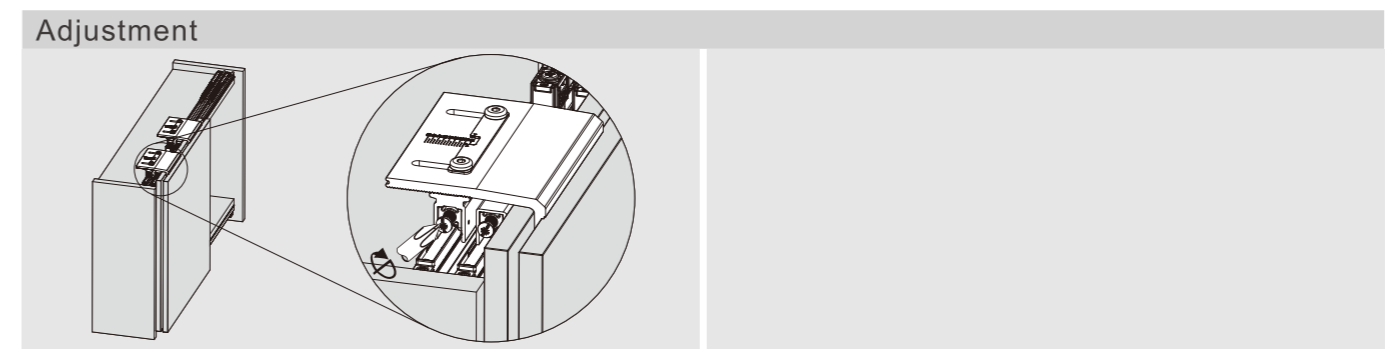
"Disengaged position" of locking device on bottom roller

"Engaged position" of locking device on bottom roller



Engage the locking device on top rollers of outer and inner door

Turn the screw clockwise with a 3mm allen key to engage the locking devices on the top rollers of the outer and inner doors



Level the outer and inner doors



ORDER INFORMATION

| | | | |
|--|------------------------------------|--------------------------|--|
| | Bottom roller / Industrial package | | |
| | Item no. | pcs/ctn | |
| | 0CKDL1 | Stainless steel(F04) 100 | |
| | 0CKDL2 | Zinc Plated(B02) 100 | |
| | Bottom roller / Industrial package | | |
| | Item no. | pcs/ctn | |
| | 0CKDLA1 | Stainless steel(F04) 100 | |
| | 0CKDLA2 | Zinc Plated(B02) 100 | |
| | Bottom roller / Industrial package | | |
| | Item no. | pcs/ctn | |
| | 0CKHL1 | Stainless steel(F04) 100 | |
| | 0CKHL2 | Zinc Plated(B02) 100 | |
| | Top roller / Industrial package | | |
| | Item no. | pcs/ctn | |
| | 0CSTL-E | Zinc Plated(B02) 200 | |
| | Top roller / Industrial package | | |
| | Item no. | pcs/ctn | |
| | 0CSTL-G | Zinc plated(B02) 200 | |
| | Top roller / Industrial package | | |
| | Item no. | pcs/ctn | |
| | 0CSTL-H | Zinc plated(B02) 400 | |

We are continuously developing new products.
For updated product information, please log onto www.dtcctc.com