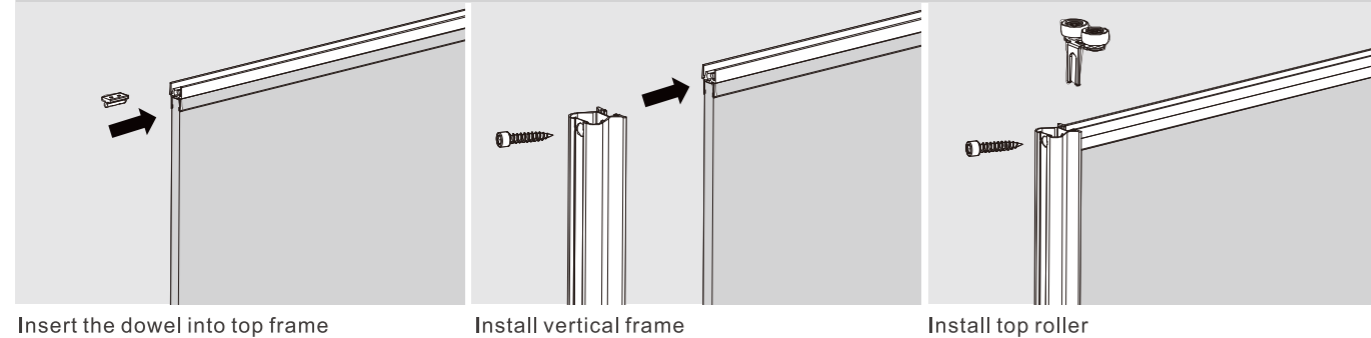


# ASSEMBLY AND ADJUSTMENT

Assembly and Adjustment (for CS Series)

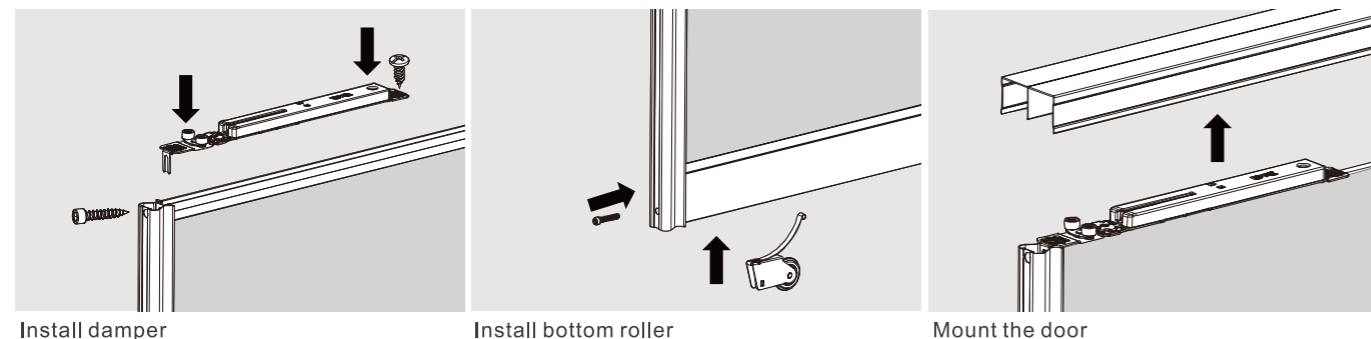
## CS Series Installation for Aluminum frame Door



Insert the dowel into top frame

Install vertical frame

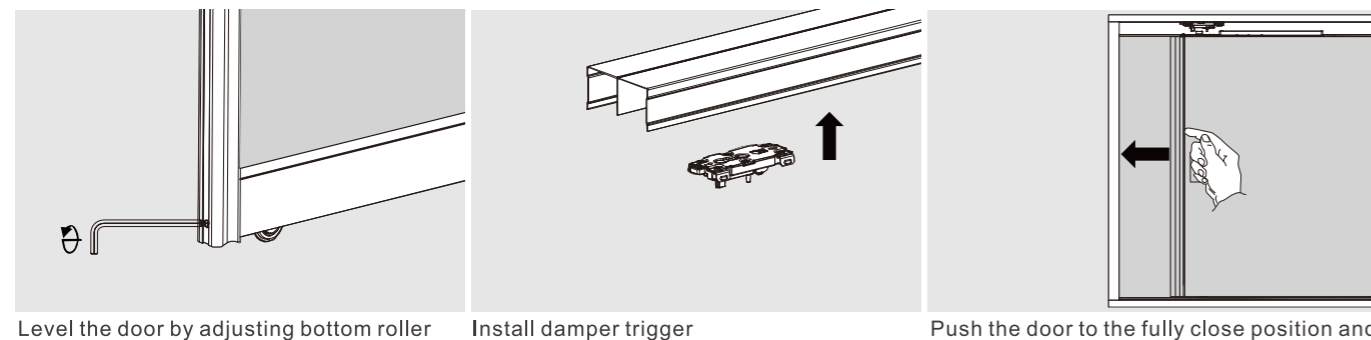
Install top roller



Install damper

Install bottom roller

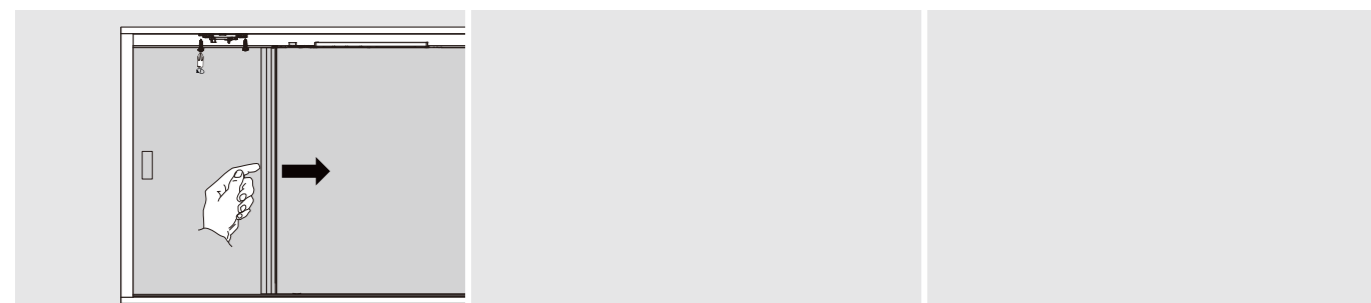
Mount the door



Level the door by adjusting bottom roller

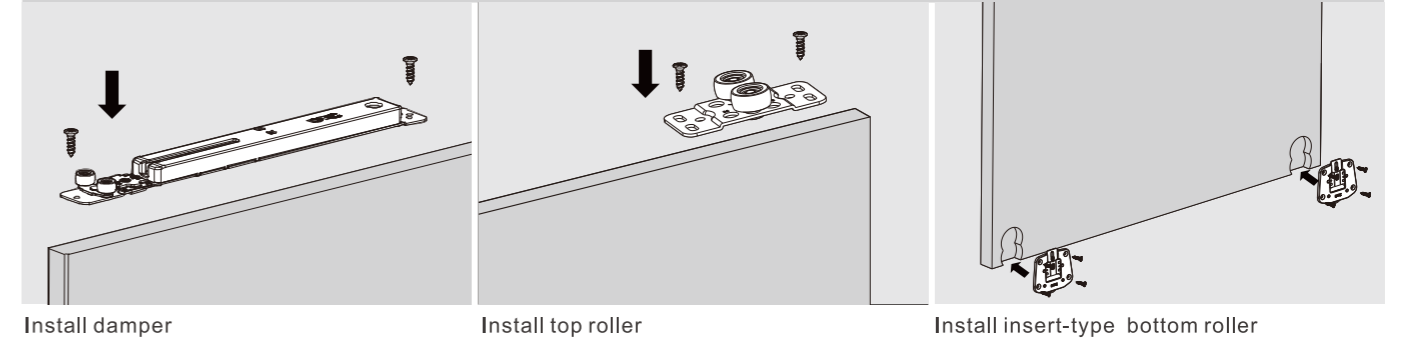
Install damper trigger

Push the door to the fully close position and locate the position for the damper trigger



Pull the door open, then fix the damper trigger with screws

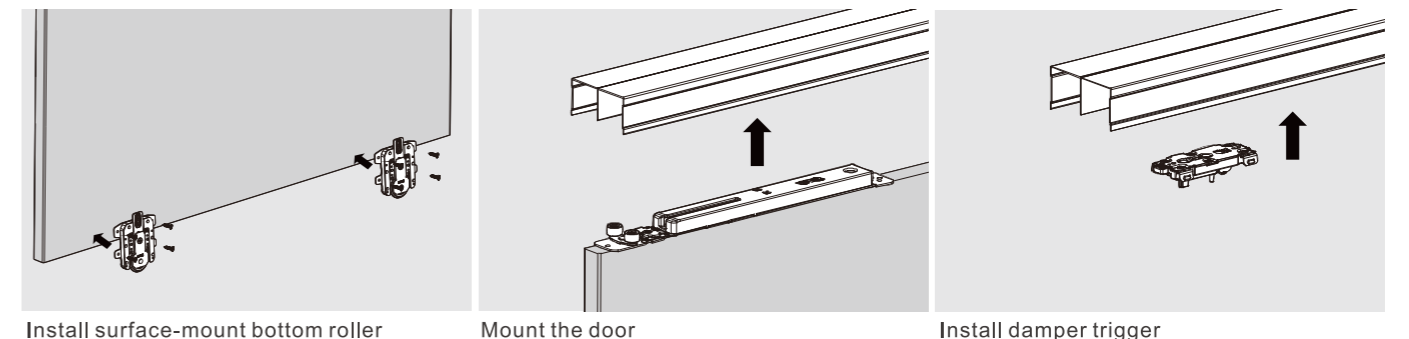
## CS Series Installation for Wood Door



Install damper

Install top roller

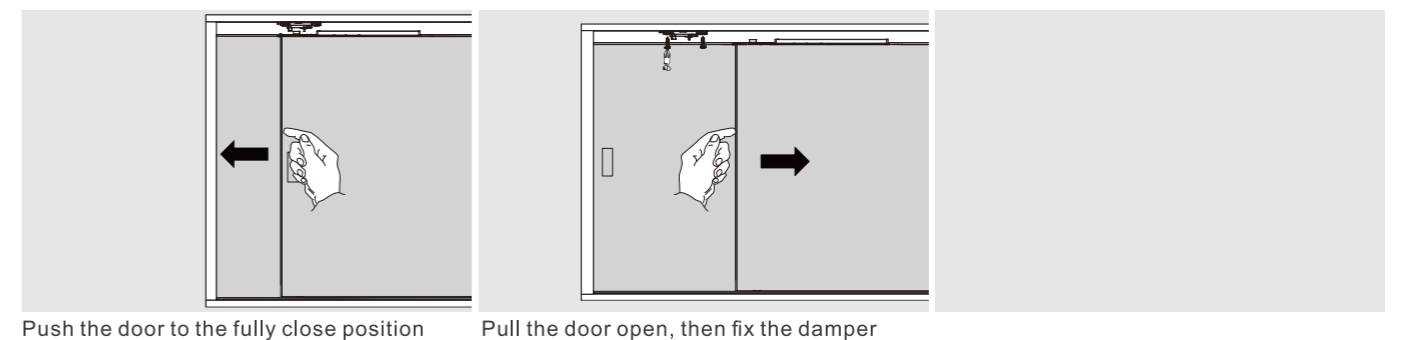
Install insert-type bottom roller



Install surface-mount bottom roller

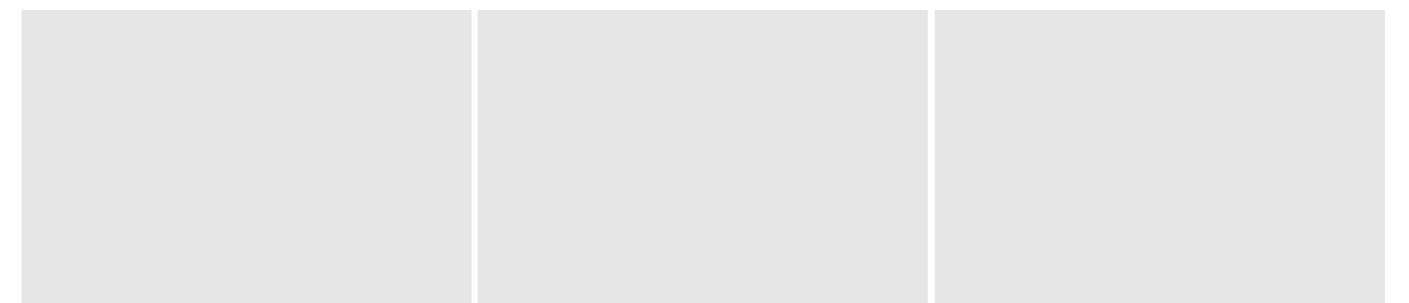
Mount the door

Install damper trigger



Push the door to the fully close position and locate the position for the damper trigger

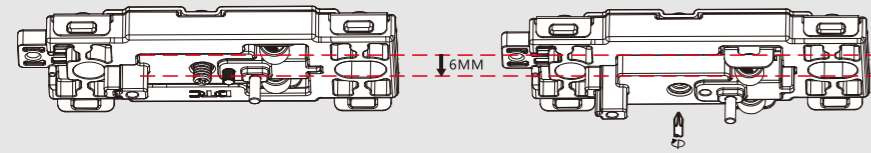
Pull the door open, then fix the damper trigger with screws



# ASSEMBLY AND ADJUSTMENT

Assembly and Adjustment (for CS Series)

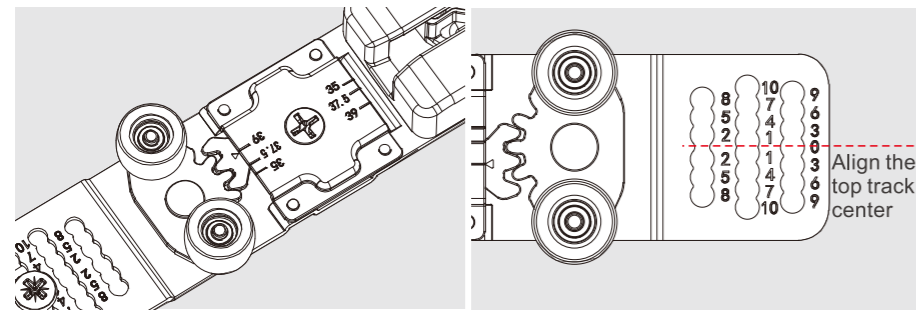
## CS Series Adjustment



Before adjustment

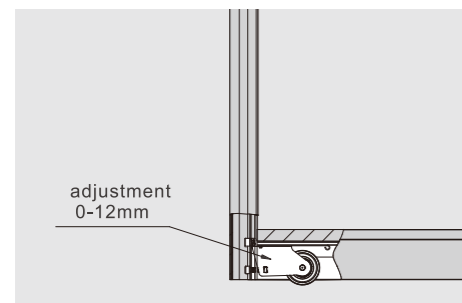
After adjustment  
(position down up to 6mm)

Damper trigger adjustment

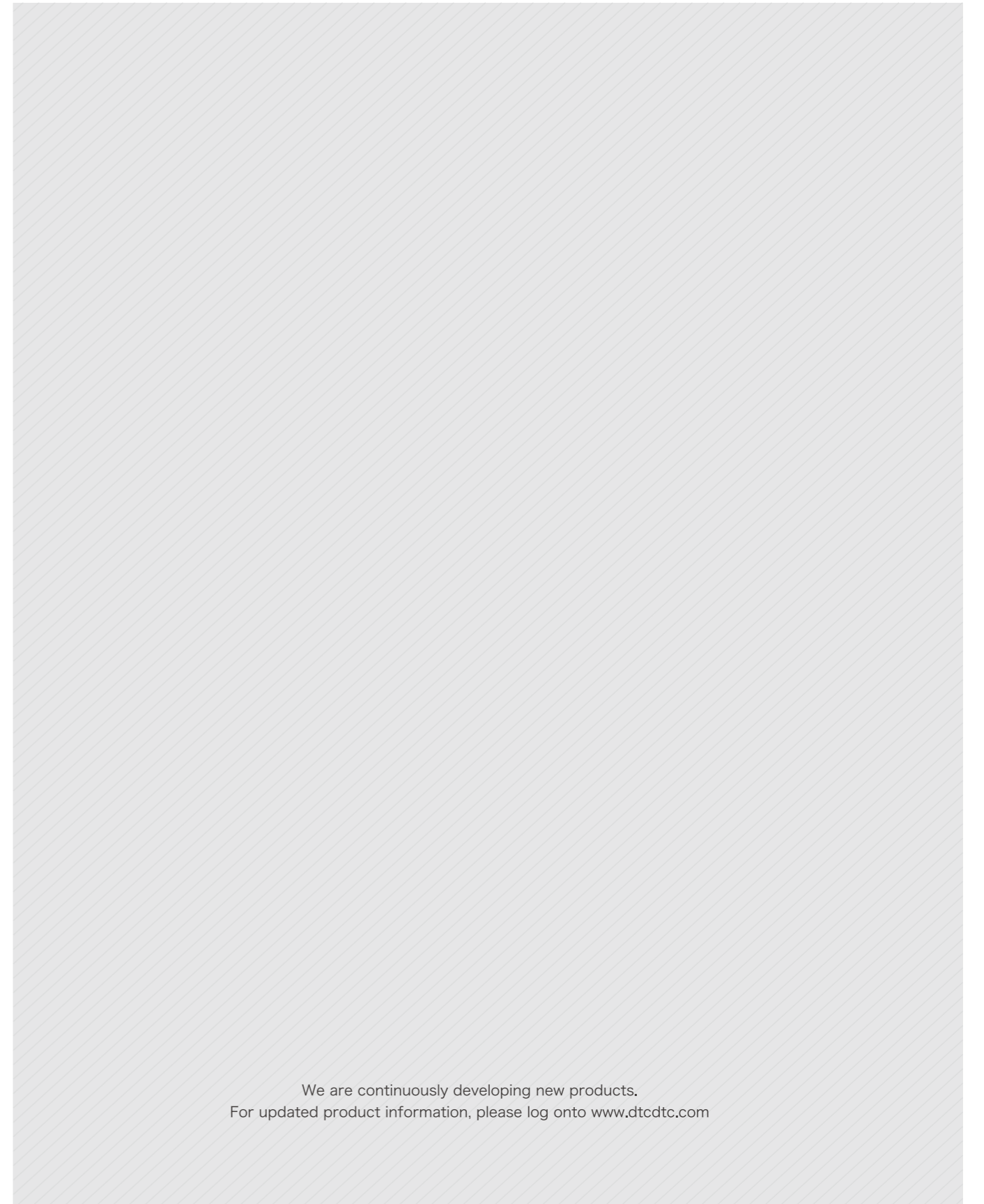
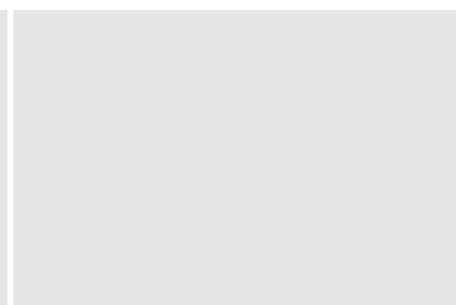
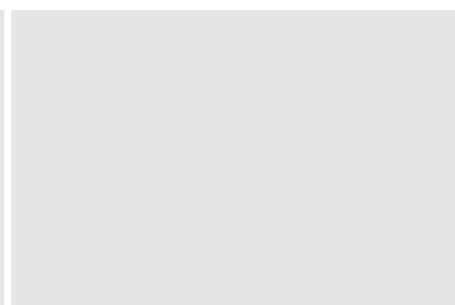
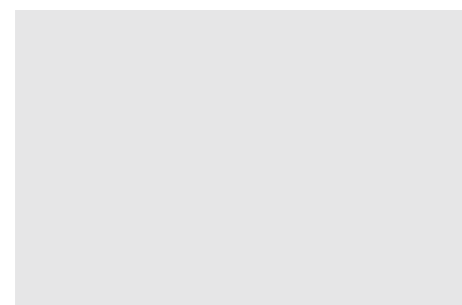
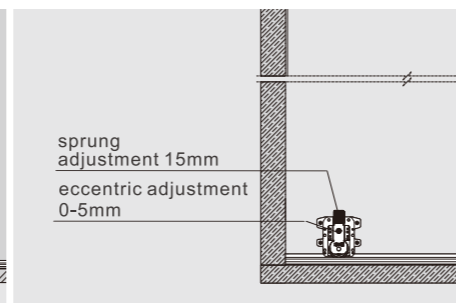
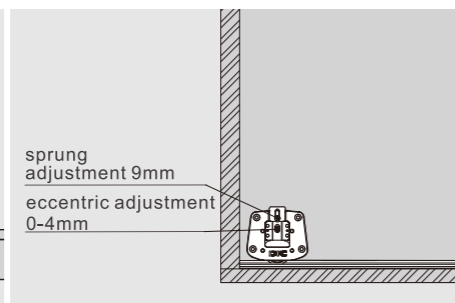


Guiding roller interval adjustment  
35-39mm

Having 0 as center, fix the screw according  
to door position



Bottom roller adjustment



We are continuously developing new products.  
For updated product information, please log onto [www.dtcctc.com](http://www.dtcctc.com)

# TRACK-PRO

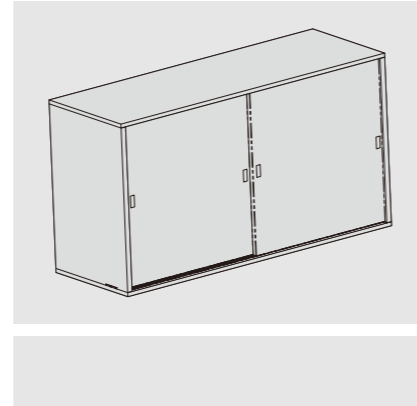
CSS Series Soft-close Sliding Door System

## PRODUCT



## DESCRIPTION

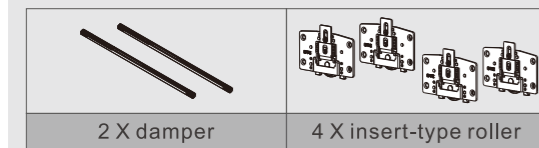
- Gentle and smooth door opening and closing thanks to patented damper design
- Effective catching mechanism prevents door disengagement
- Double-roller deviced on damper trigger provides smooth and stable movement and avoids roller disengagement
- Sufficient door height adjustments, efficient and convenient adjustments thanks to unique eccentric disc design on bottom roller
- 9mm sprung adjustment, and 4mm eccentric adjustment (totally adjustment 13mm)



## CSS Two-way Soft-close, Insert-type Roller, for Wood Door

Kit Package			
Door Weight(KG)	Item No.	Set/ctn	
5~15	0CSS01A	10	
15~30	0CSS01B	10	
30~50	0CSS01C	10	

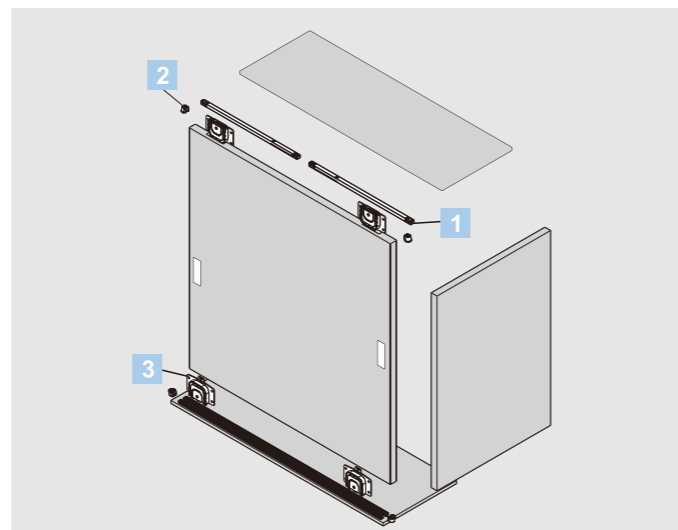
0CSS01 Kit Package includes:



1 Damper / Industrial package			
Door Weight(KG)	Item No.	Pcs/ctn	
5~15	CSSHCA1	200	
15~30	CSSHCA2	200	
30~50	CSSHCA3	200	

2 Track plug / Industrial package (Optional)			
Item No.	Pcs/ctn		
CSSDW01	2000		

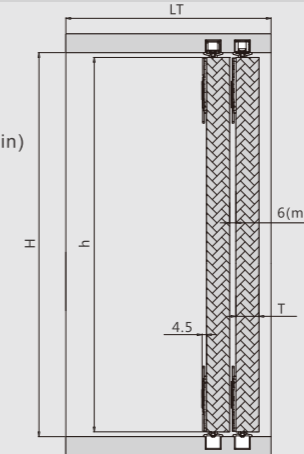
3 Insert-type roller / Industrial package			
Item No.	Pcs/ctn		
CSSYLA	100		



## PLANNING

### Sliding Door Installation Dimensions(mm)

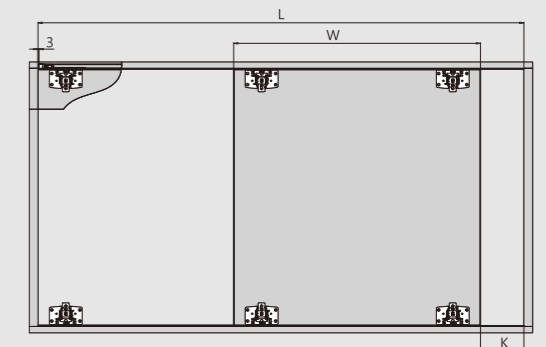
H=wardrobe internal height  
h=door height  
LT=wardrobe internal depth  
T=door thickness  
Wardrobe internal depth: LT=95(min)  
Door height:h=H-15  
Door thickness:T≥16



Distance from door bottom to bottom track surface:2~11

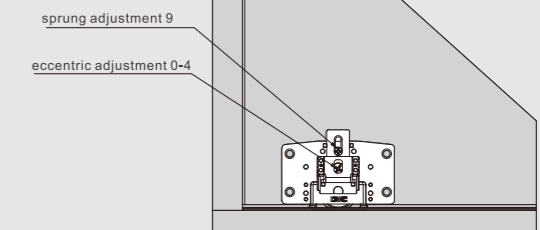
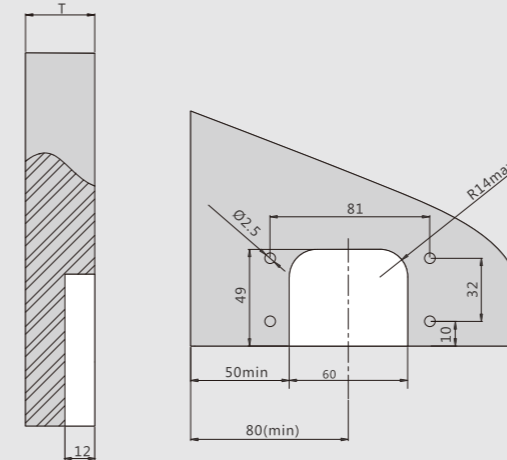
### Sliding Door Installation Dimensions(mm)

W=door width  
L=wardrobe internal width  
Door Width: W=L/2+15

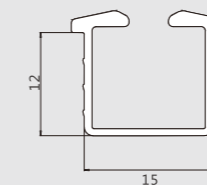


Door self closing distance K=50

### Sliding Door Drilling Dimensions(mm)



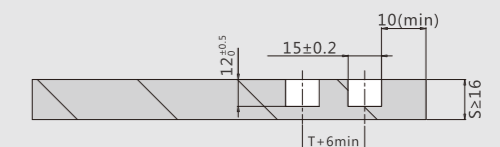
### Top and Bottom Track Installation Dimensions(mm)



Top and Bottom Track / Industrial package  
Silver white ( F98 )

Item No.	Pcs/ctn
CSSDG01	20

Length : 6 meters



# TRACK-PRO

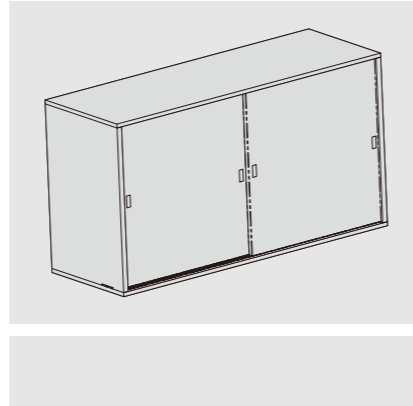
CSS Series Soft-close Sliding Door System

## PRODUCT



## DESCRIPTION

- Gentle and smooth door opening and closing thanks to patented damper design
- Effective catching mechanism prevents door disengagement
- Double-roller deviced on damper trigger provides smooth and stable movement and avoids roller disengagement
- Sufficient door height adjustments, efficient and convenient adjustments thanks to unique eccentric disc design on bottom roller
- 12mm sprung adjustment, and 4mm eccentric adjustment (totally adjustment 16mm)



## CSS Two-way Soft-close, Surface-mount Roller With Brush, for Wood Door

Kit Package			
Door Weight(KG)	Item No.	Set/ctn	
5~15	0CSS03A	10	
15~30	0CSS03B	10	
30~50	0CSS03C	10	

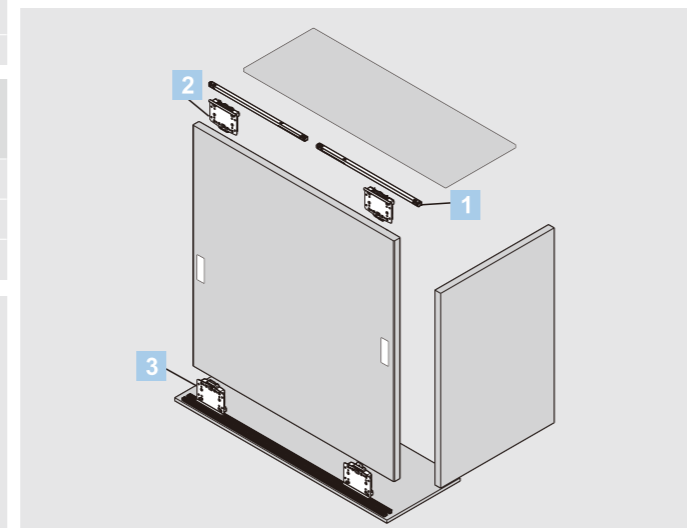
0CSS03 Kit Package includes:

2 x damper	2 x surface-mount top roller	2 x surface-mount bottom roller with brush

1 Damper / Industrial package			
Door Weight(KG)	Item No.	Pcs/ctn	
5~15	CSSHCA1	200	
15~30	CSSHCA2	200	
30~50	CSSHCA3	200	

2 Surface-mount top roller / Industrial package			
Item No.	Pcs/ctn		
CSSMLA	100		

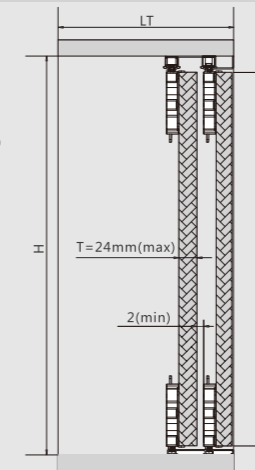
3 Surface-mount bottom roller with brush Industrial package			
Item No.	Pcs/ctn		
CSSMLB	100		



## PLANNING

### Sliding Door Installation Dimensions(mm)

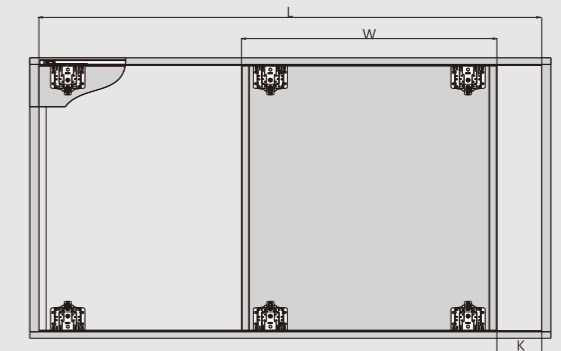
H=wardrobe internal height  
h=door height  
LT=wardrobe internal depth  
T=door thickness  
Wardrobe internal depth: LT=95(min)  
Door height:h=H-35  
Door thickness:T=24(max)



Distance from door bottom to bottom track surface:2~11

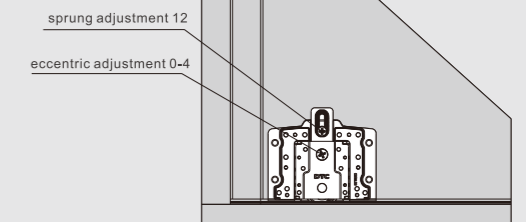
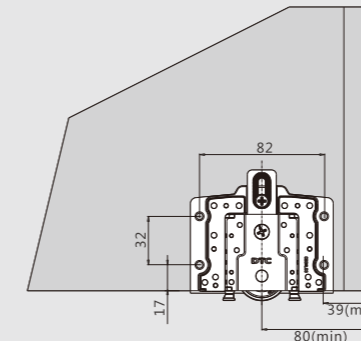
### Sliding Door Installation Dimensions(mm)

W=door width  
L=wardrobe internal width  
Door Width: W=L/2+15

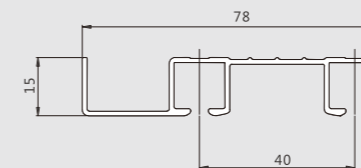


Door self closing distance K=50

### Sliding Door Installation Dimensions(mm)



### Top Track Installation Dimensions(mm)

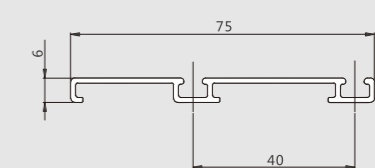


Top Track / Industrial package  
Silver white ( F98 )

Item No.	Pcs/ctn
CSSDG02	5

Length : 6 meters

### Bottom Track Installation Dimensions(mm)



Bottom Track / Industrial package  
Silver white ( F98 )

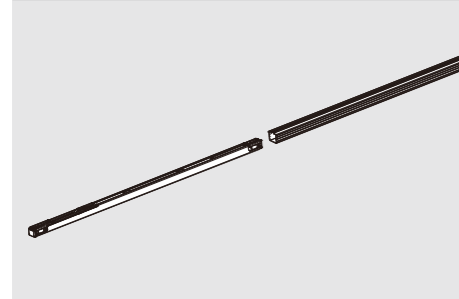
Item No.	Pcs/ctn
CSSDG03	10

Length : 6 meters

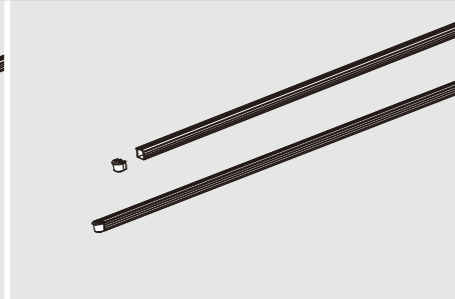
# ASSEMBLY AND ADJUSTMENT

Assembly and Adjustment (for CSS Series)

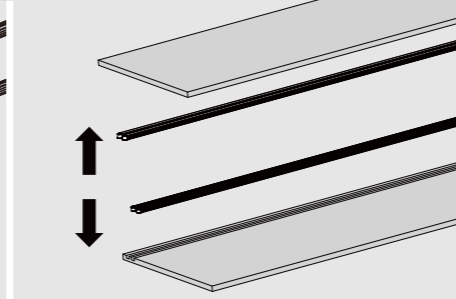
## CSS Series Installation



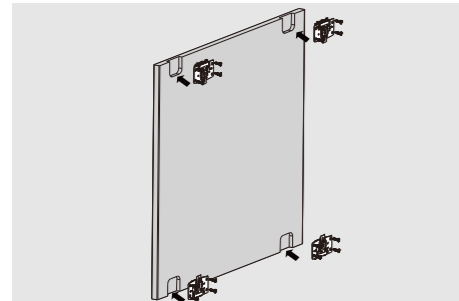
Install damper



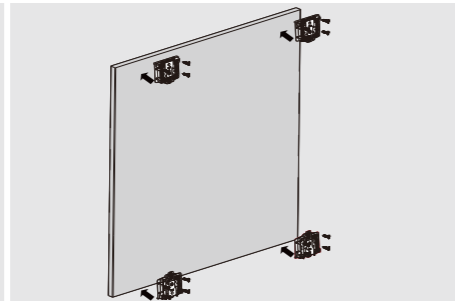
Install track plug(Optional)



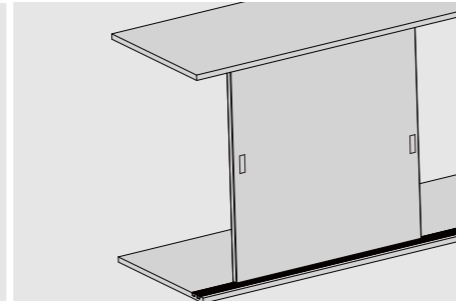
Install the track



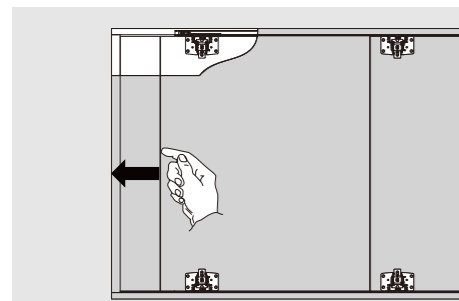
Install insert-type roller



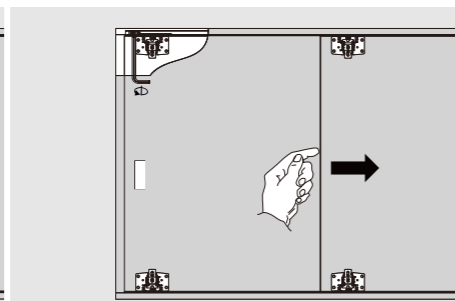
Install surface-mount roller



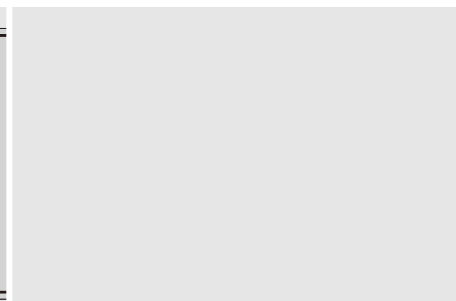
Mount the door



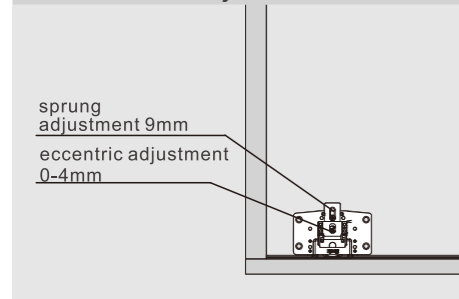
Push the door to the fully close position and locate the position for the damper



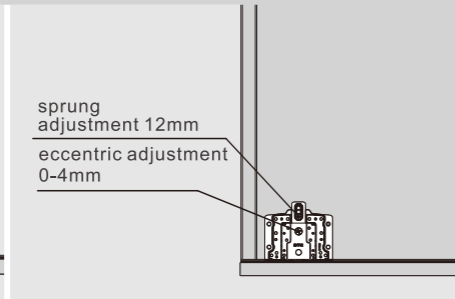
Pull the door open, then fix the damper with an Allen key



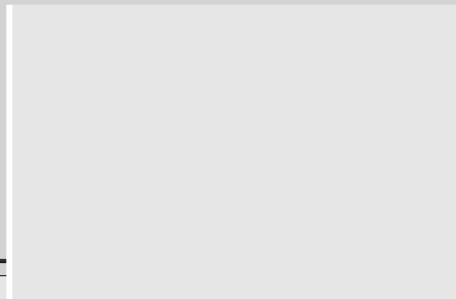
## CSS Series Adjustment



Insert-type roller adjustment



Surface-mount roller adjustment



We are continuously developing new products.  
For updated product information, please log onto [www.dtcctc.com](http://www.dtcctc.com)

# TRACK-PRO

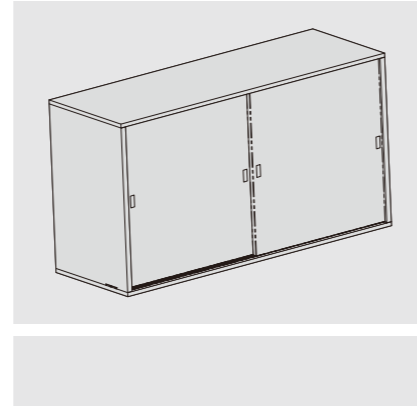
CQ Series Soft-close Sliding Door System

## PRODUCT

## DESCRIPTION



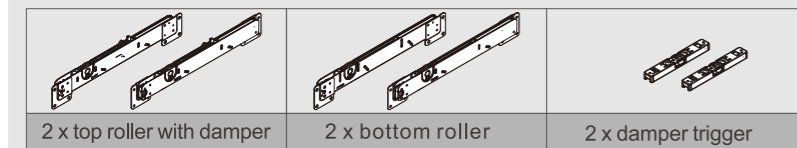
- Gentle and smooth door opening and closing thanks to patented damper design
- Effective catching mechanism prevents door disengagement
- Wide range door adjustment



## CQ Two-way Soft-close, Insert-type Roller, For Wood Door

Kit Package			
Door Weight(KG)	Item No.	Set/ctn	
5~15	0CQHC01A	10	
15~30	0CQHC01B	10	
30~50	0CQHC01C	10	

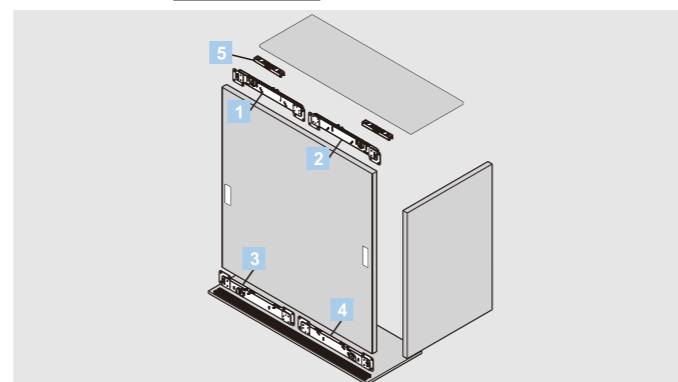
### CQ Kit Package includes:



1 Top roller with damper(left) /industrial package				2 Top roller with damper(right) /industrial package			
Door Weight(KG)	Item No.	Pcs/ctn		Door Weight(KG)	Item No.	Pcs/ctn	
5~15	CQCT01LA	40		5~15	CQCT01RA	40	
15~30	CQCT01LB	40		15~30	CQCT01RB	40	
30~50	CQCT01LC	40		30~50	CQCT01RC	40	

3 Bottom roller(left) /industrial package			5 Damper trigger /industrial package		
Item No.	Pcs/ctn		Item No.	Pcs/ctn	
CQCT02L	40		CQBD01	1000	

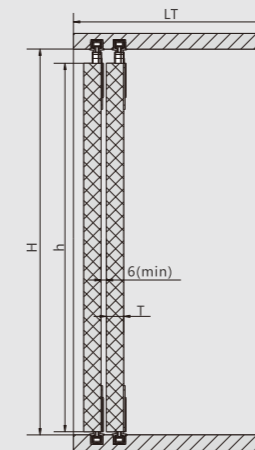
4 Bottom roller(right) /industrial package		
Item No.	Pcs/ctn	
CQCT02R	40	



## PLANNING

### Sliding Door Installation Dimensions(mm)

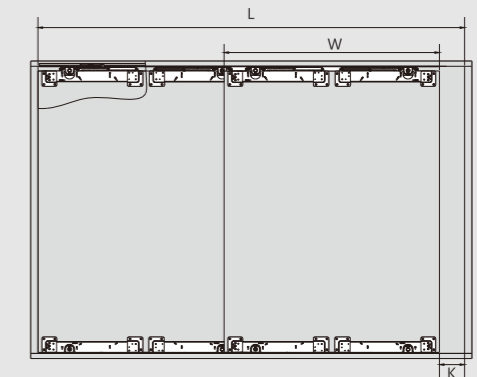
H=wardrobe internal height  
 h=door height  
 LT=wardrobe internal depth  
 T=door thickness  
 Wardrobe internal depth: LT=95(min)  
 Door height:h=H-20  
 Door thickness:T≥16



Distance from door bottom to bottom track surface:2.5~9.5

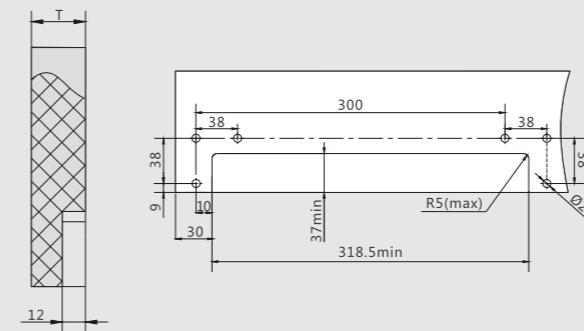
### Sliding Door Installation Dimensions(mm)

W=door width  
 L=wardrobe internal width  
 $W=L/2+15$

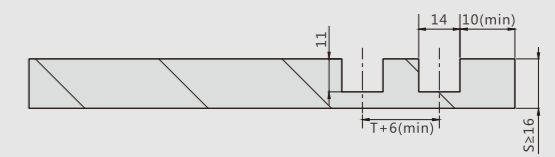


Door self closing distance K=50

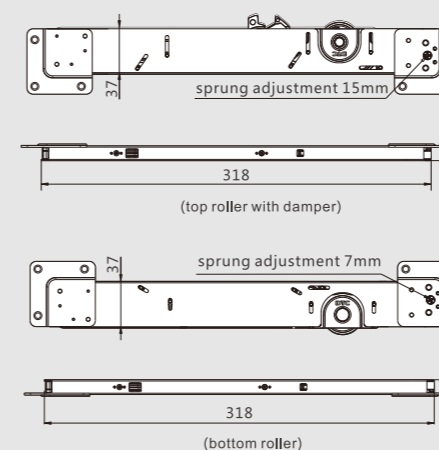
### Door Notching and Drilling Dimensions(mm)



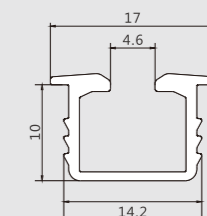
### Wardrobe Panel Notching Dimensions(mm)



### Top Roller and Bottom Roller Adjustments(mm)



### Top and Bottom Track Installation Dimensions(mm)



Top and Bottom Track / Industrial package  
 Silver white ( F98 )

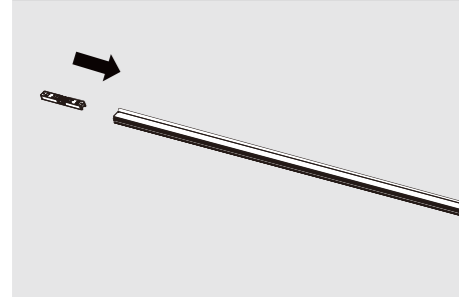
Item No.	Pcs/ctn
CQDG01	20

Length : 6 meters

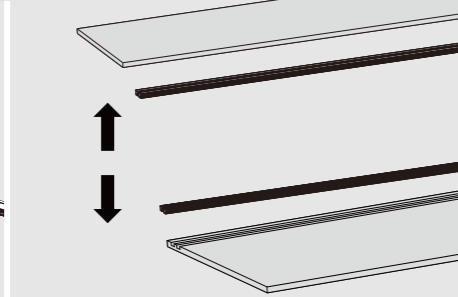
# ASSEMBLY AND ADJUSTMENT

Assembly And Adjustment (for CQ Series)

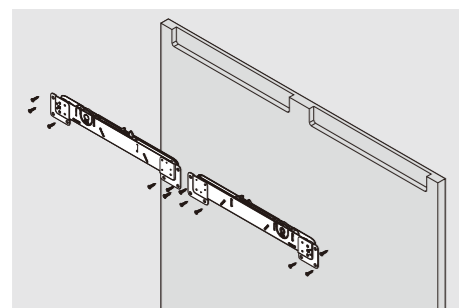
## CQ Series Installation



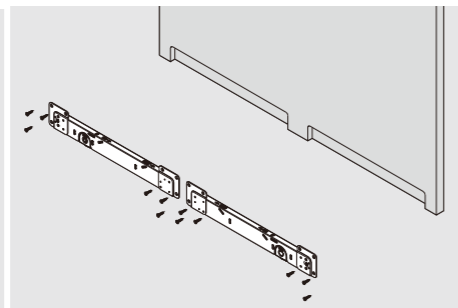
Insert the damper trigger into top track



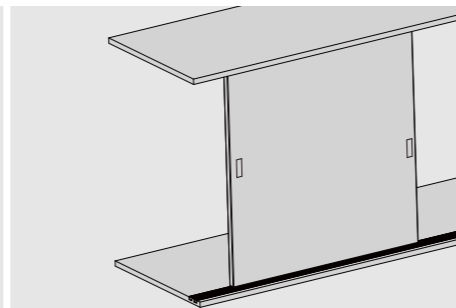
Install the top and bottom tracks



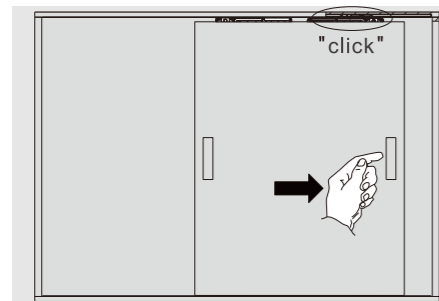
Install top roller with damper



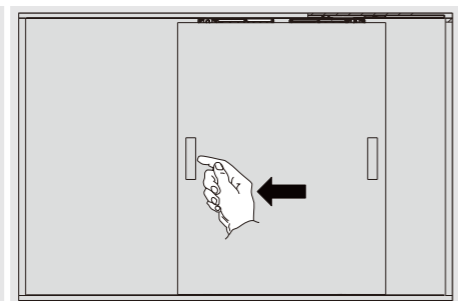
Install bottom roller



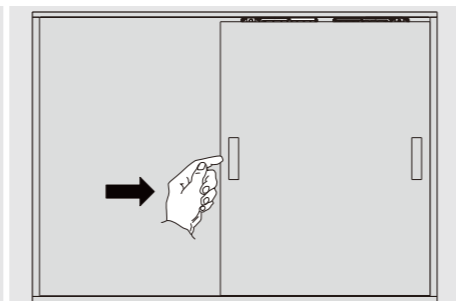
Mount the door



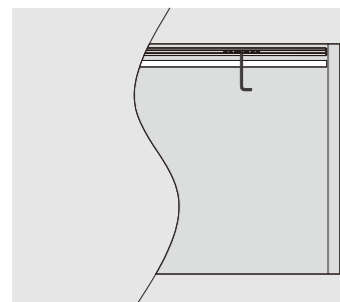
Push the door till a short "click"



Then, pull the door back

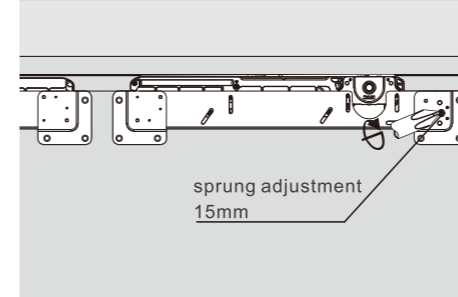


Push the door again to the fully close position and locate the position for the damper trigger

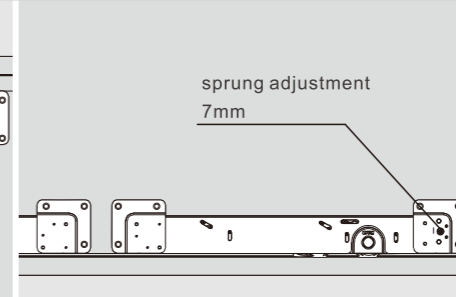


Then fix the damper trigger with a 2.5mm allen key

## CQ Series Adjustment



Top roller with damper  
Fix this screw after the door is adjusted to appropriate vertical position



Bottom roller